

Anti-EIF4E Antibody (R2Z83)

Summary

Catalog No.	RHC20904
Clone ID	R2Z83
Host species	Mouse
Tested applications	ELISA: 1:10000, FCM: 1:200-1:400, IF: 1:200-1:1000, IHC: 1:200-1:1000, WB: 1:500-1:2000
Species reactivity	Human
Form	Liquid
Storage buffer	0.01M PBS, pH 7.4, 0.05% Sodium Azide.
Concentration	1 mg/ml
Purity	>95% as determined by SDS-PAGE.
Clonality	Monoclonal
Isotype	IgG1
Applications	ELISA, FCM, IF, IHC, WB
Target	Eukaryotic translation initiation factor 4E, EIF4F, mRNA cap-binding protein, eIF4E, eIF-4E, eIF-4F 25 kDa subunit, EIF4EL1, EIF4E
Purification	Protein A/G purified from cell culture supernatant.
Endotoxin level	Please contact with the lab for this information.
Accession	P06730

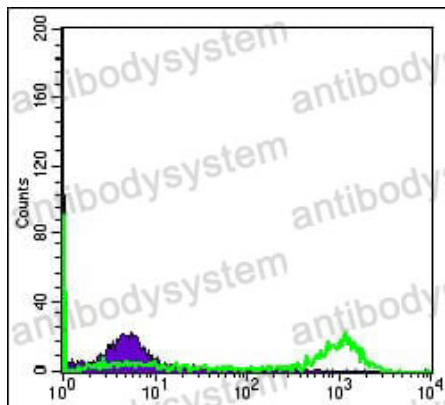
Stability and Storage

Use a manual defrost freezer and avoid repeated freeze-thaw cycles.

Store at 4°C short term (1-2 weeks). Store at -20°C 12 months. Store at -80°C long term.

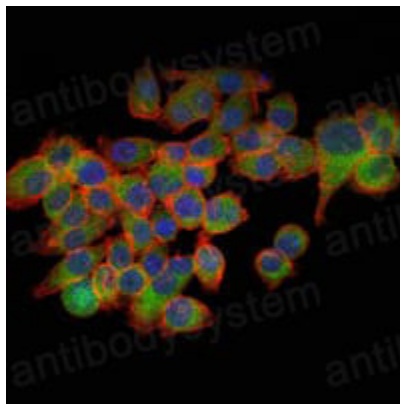
Note

For research use only.

Data Image

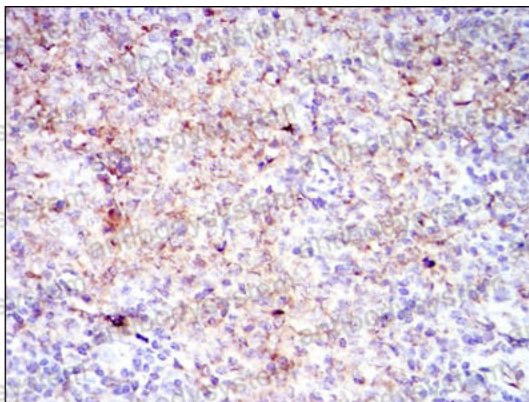
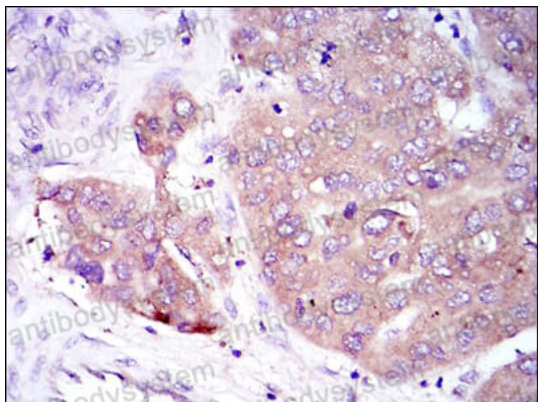
Flow Cytometry

Flow cytometric analysis of Hela cells using EIF4E mouse mAb (green) and negative control (purple).



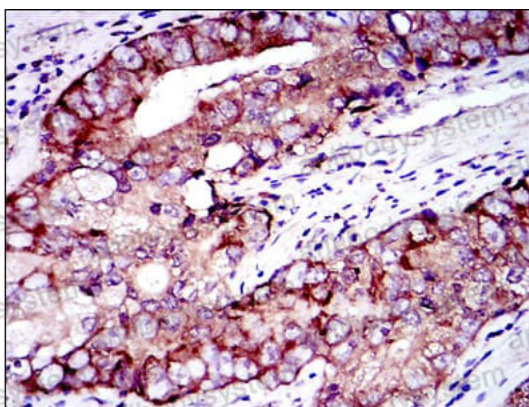
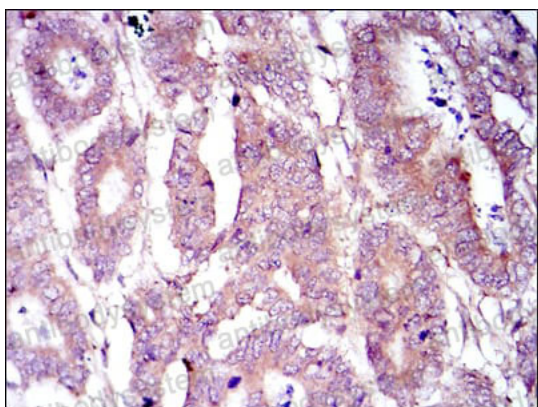
Immunofluorescence

Immunofluorescence analysis of GC-7901 cells using EIF4E mouse mAb (green). Blue: DRAQ5 fluorescent DNA dye. Red: Actin filaments have been labeled with Alexa Fluor-555 phalloidin.



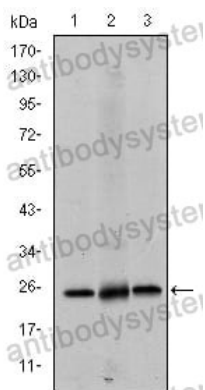
Immunohistochemical analysis of paraffin-embedded human liver cancer (left) and submaxillary tumor (right) using EIF4E mouse mAb with DAB staining.

Immunohistochemical



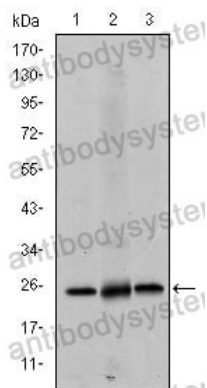
Immunohistochemical analysis of paraffin-embedded human stomach cancer (left) and prostate cancer (right) using EIF4E mouse mAb with DAB staining.

Immunohistochemical



Western blot analysis using EIF4E mouse mAb against Hela (1), HEK293 (2) and K562 (3) cell lysate.

Western blot



Western blot

Western blot analysis
using EIF4E mouse mAb
against Hela (1), HEK293
(2) and K562 (3) cell
lysate.