

Anti-S100A6 Antibody (R2Z77)

Summary

Catalog No.	RHC20603
Clone ID	R2Z77
Host species	Mouse
Tested applications	WB: 1:500-1:1000
Species reactivity	Human
Form	Liquid
Storage buffer	0.01M PBS, pH 7.4, 0.5% BSA, 0.05% Sodium Azide and 50% Glycerol.
Concentration	1 mg/ml
Purity	>95% as determined by SDS-PAGE.
Clonality	Monoclonal
Isotype	IgG1
Applications	WB
Target	Calcyclin, S100A6, S100 calcium-binding protein A6, Protein S100-A6, Prolactin receptor-associated protein, MLN 4, CACY, PRA, Growth factor-inducible protein 2A9
Purification	Protein A/G purified from cell culture supernatant.
Endotoxin level	Please contact with the lab for this information.
Accession	P06703

Stability and Storage

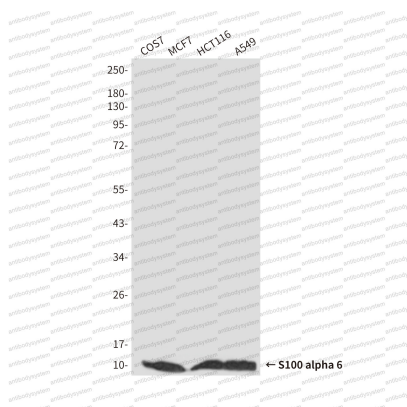
Use a manual defrost freezer and avoid repeated freeze-thaw cycles.

Store at 4°C short term (1-2 weeks). Store at -20°C 12 months. Store at -80°C long term.

Note

For research use only.

Data Image



Western blot

Western blot analysis of S100A6 in COS7, MCF-7, HCT116 and A549 lysates using S100A6 antibody.