

# Anti-CDK1 Antibody (R2Z70)

## Summary

---

<b>Catalog No.</b>	RHC20206
<b>Clone ID</b>	R2Z70
<b>Host species</b>	Mouse
<b>Tested applications</b>	IHC: 1:200-1:1000, WB: 1:500-1:2000
<b>Species reactivity</b>	Human
<b>Form</b>	Liquid
<b>Storage buffer</b>	0.01M PBS, pH 7.4, 0.05% Sodium Azide.
<b>Concentration</b>	1 mg/ml
<b>Purity</b>	>95% as determined by SDS-PAGE.
<b>Clonality</b>	Monoclonal
<b>Isotype</b>	IgG1
<b>Applications</b>	IHC, WB
<b>Target</b>	CDC28A, CDKN1, P34CDC2, p34 protein kinase, CDK1, Cell division protein kinase 1, Cell division control protein 2 homolog, CDC2, Cyclin-dependent kinase 1
<b>Purification</b>	Protein A/G purified from cell culture supernatant.
<b>Endotoxin level</b>	Please contact with the lab for this information.
<b>Accession</b>	P06493

## Recombinant Proteins &amp; Antibodies

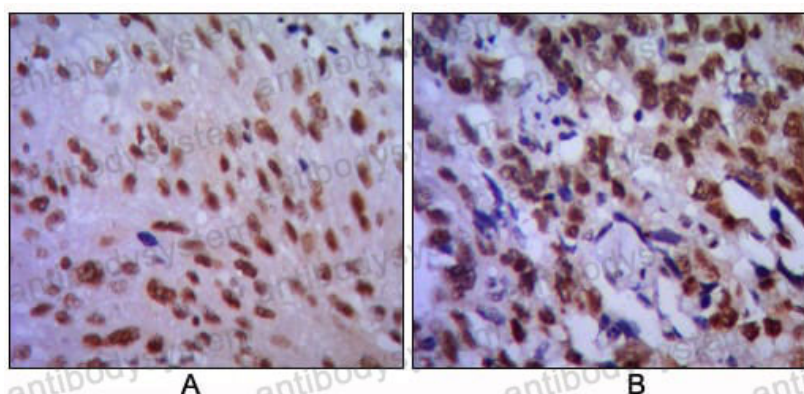
**Stability and Storage**

Use a manual defrost freezer and avoid repeated freeze-thaw cycles.

Store at 4°C short term (1-2 weeks). Store at -20°C 12 months. Store at -80°C long term.

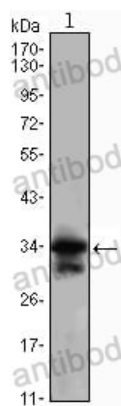
**Note**

For research use only.

**Data Image**

Immunohistochemical analysis of paraffin-embedded human lung cancer (A) and esophageal cancer (B), showing cytoplasmic localization using CDC2 mouse mAb with DAB staining.

Immunohistochemical



Western blot analysis using CDC2 mouse mAb against Jurkat (1) cell lysate.

Western blot