

# Anti-PGR Antibody (R2Z69)

## Summary

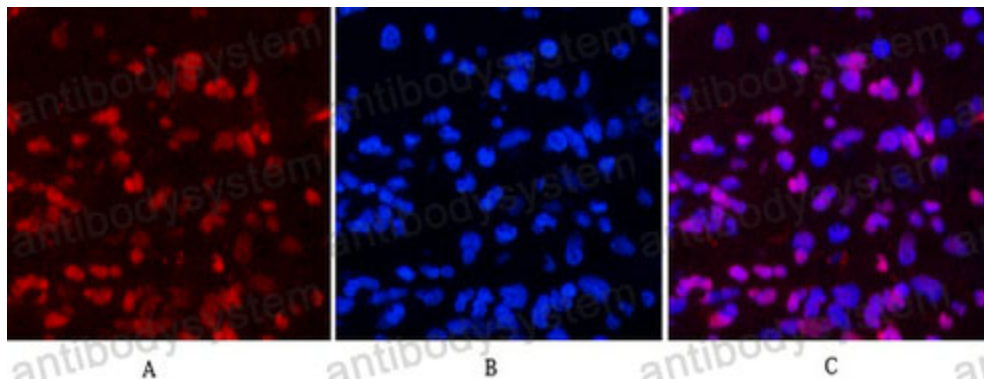
---

|                              |   |
|------------------------------|---|
| <b>Catalog No.</b>           | RHC20005  |
| <b>Clone ID</b>              | R2Z69   |
| <b>Host species</b>          | Mouse   |
| <b>Tested applications</b>   | IF: 1:50-1:200, IHC: 1:50-1:100   |
| <b>Species reactivity</b>    | Human, Mouse, Rat   |
| <b>Form</b>                  | Liquid  |
| <b>Storage buffer</b>        | 0.01M PBS, pH 7.4, 0.5% BSA, 0.05% Sodium Azide and 50% Glycerol.   |
| <b>Concentration</b>         | 1 mg/ml   |
| <b>Purity</b>                | >95% as determined by SDS-PAGE.   |
| <b>Clonality</b>             | Monoclonal  |
| <b>Isotype</b>               | IgG1  |
| <b>Applications</b>          | IF, IHC   |
| <b>Target</b>                | Progesterone receptor, NR3C3, PGR, Nuclear receptor subfamily 3 group C member 3, PR  |
| <b>Purification</b>          | Protein A/G purified from cell culture supernatant.   |
| <b>Endotoxin level</b>       | Please contact with the lab for this information.   |
| <b>Accession</b>             | P06401  |
| <b>Stability and Storage</b> | Use a manual defrost freezer and avoid repeated freeze-thaw cycles.<br>Store at 4°C short term (1-2 weeks). Store at -20°C 12 months. Store at -80°C long term. |

Note

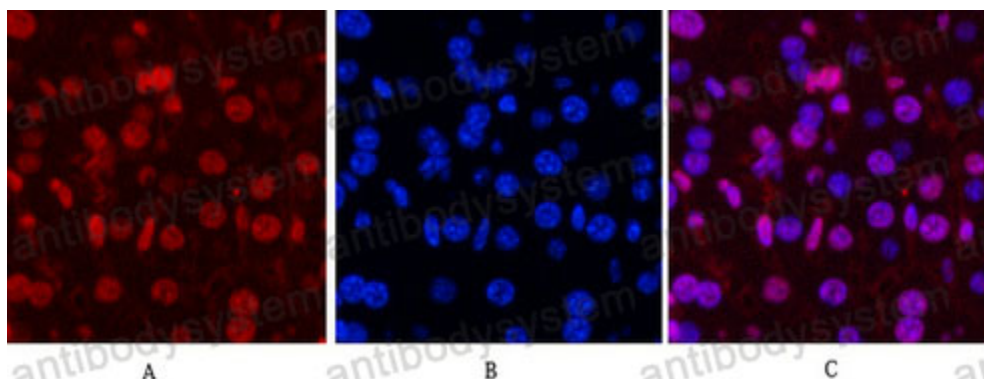
For research use only.

## Data Image



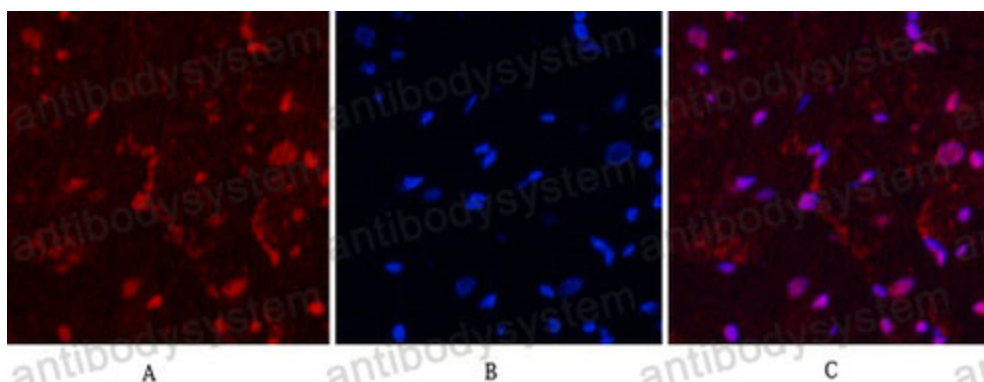
Immunofluorescence analysis of Progesterone Receptor in Human appendix tissue using Progesterone Receptor antibody(Z15)(red),and DAPI (blue).

Immunofluorescence



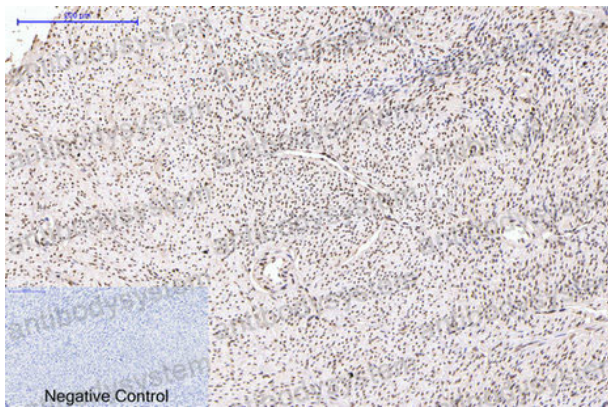
Immunofluorescence analysis of Progesterone Receptor in mouse liver using PR antibody(Z15)(red),and DAPI (blue).

Immunofluorescence



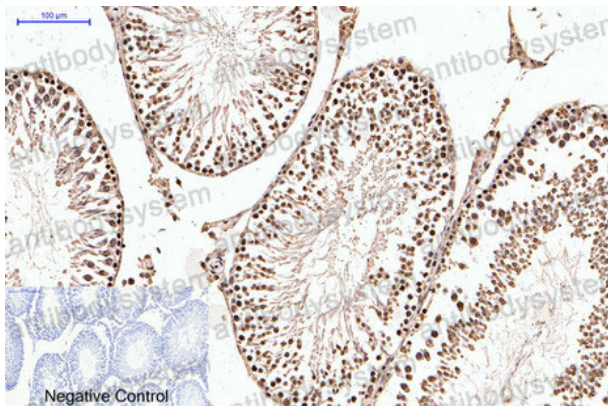
Immunofluorescence analysis of Progesterone Receptor in rat heart using Progesterone Receptor antibody(red) , and DAPI (blue).

Immunofluorescence



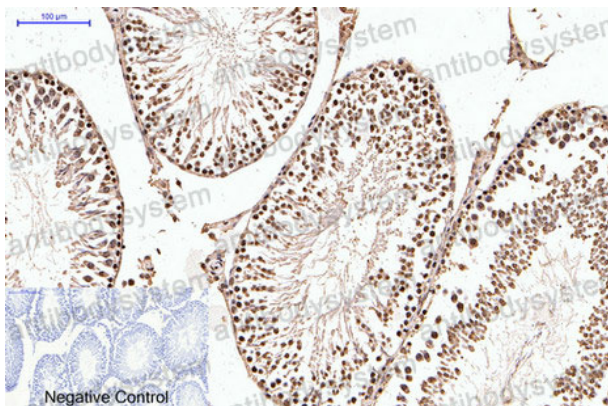
Immunohistochemical

Immunohistochemistry analysis of paraffin-embedded Human uterus tissue using Progesterone Receptor antibody. High-pressure and temperature Sodium Citrate pH 6.0 was used for antigen retrieval. Negative control was used by secondary antibody only.



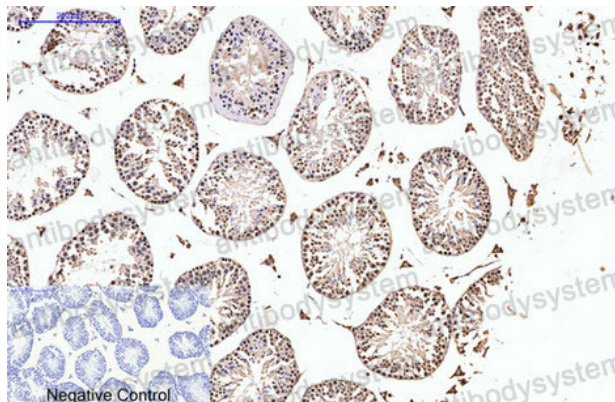
Immunohistochemical

Immunohistochemical analysis of paraffin-embedded Human tonsils using Progesterone Receptor antibody. High-pressure and temperature Sodium Citrate pH 6.0 was used for antigen retrieval. Negative control was used by secondary antibody only.



Immunohistochemical

Immunohistochemical analysis of paraffin-embedded Human tonsils using Progesterone Receptor antibody. High-pressure and temperature Sodium Citrate pH 6.0 was used for antigen retrieval. Negative control was used by secondary antibody only.



Immunohistochemical

Immunohistochemistry analysis of paraffin-embedded mouse testis tissue using PR antibody. High-pressure and temperature Sodium Citrate pH 6.0 was used for antigen retrieval. Negative control was used by secondary antibody only.