

Anti-FYN Antibody (R2Z60)

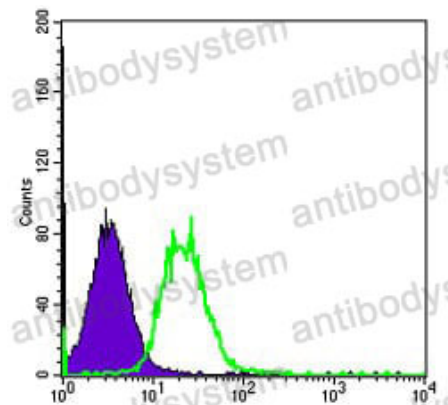
Summary

Catalog No.	RHC19302
Clone ID	R2Z60
Host species	Mouse
Tested applications	ELISA: 1:10000, FCM: 1:200-1:400, IF: 1:200-1:1000, IHC: 1:200-1:1000
Species reactivity	Human
Form	Liquid
Storage buffer	0.01M PBS, pH 7.4, 0.05% Sodium Azide.
Concentration	1 mg/ml
Purity	>95% as determined by SDS-PAGE.
Clonality	Monoclonal
Isotype	IgG1
Applications	ELISA, FCM, IF, IHC
Target	FYN, Src-like kinase, Proto-oncogene Syn, Tyrosine-protein kinase Fyn, SLK, Proto-oncogene c-Fyn, p59-Fyn
Purification	Protein A/G purified from cell culture supernatant.
Endotoxin level	Please contact with the lab for this information.
Accession	P06241
Stability and Storage	Use a manual defrost freezer and avoid repeated freeze-thaw cycles. Store at 4°C short term (1-2 weeks). Store at -20°C 12 months. Store at -80°C long term.

Note

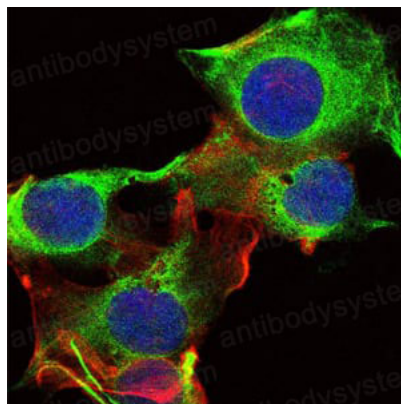
For research use only.

Data Image



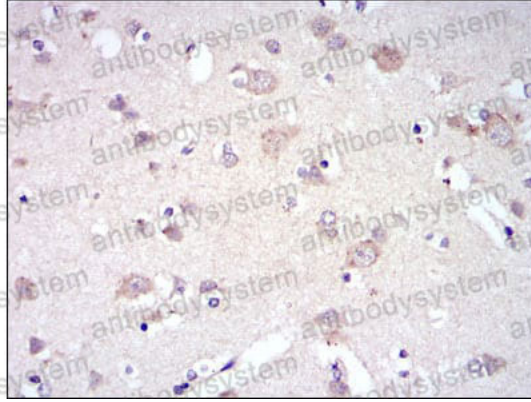
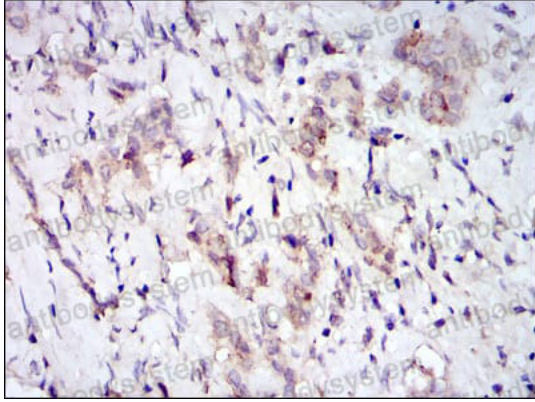
Flow Cytometry

Flow cytometric analysis of Hela cells using FYN mouse mAb (green) and negative control (purple).



Immunofluorescence

Immunofluorescence analysis of U251 cells using FYN mouse mAb (green). Blue: DRAQ5 fluorescent DNA dye. Red: Actin filaments have been labeled with Alexa Fluor-555 phalloidin.



Immunohistochemical analysis of paraffin-embedded human breast cancer tissues (left) and brain tissues (right) using FYN mouse mAb with DAB staining.

Immunohistochemical