

Anti-LCK Antibody (R2Z59)

Summary

| | |
|----------------------------|--|
| Catalog No. | RHC19203 |
| Clone ID | R2Z59 |
| Host species | Mouse |
| Tested applications | WB: 1:500-1:2000 |
| Species reactivity | Human |
| Form | Liquid |
| Storage buffer | 0.01M PBS, pH 7.4, 0.05% Sodium Azide. |
| Concentration | 1 mg/ml |
| Purity | >95% as determined by SDS-PAGE. |
| Clonality | Monoclonal |
| Isotype | IgG2a |
| Applications | WB |
| Target | T cell-specific protein-tyrosine kinase, LSK, LCK, Protein YT16, p56-LCK, Tyrosine-protein kinase Lck, Lymphocyte cell-specific protein-tyrosine kinase, Proto-oncogene Lck, Leukocyte C-terminal Src kinase |
| Purification | Protein A/G purified from cell culture supernatant. |
| Endotoxin level | Please contact with the lab for this information. |
| Accession | P06239 |

Stability and Storage

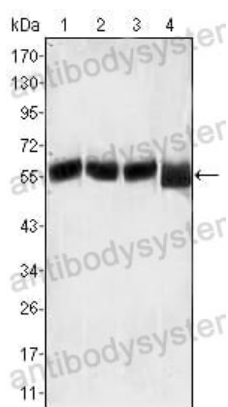
Use a manual defrost freezer and avoid repeated freeze-thaw cycles.

Store at 4°C short term (1-2 weeks). Store at -20°C 12 months. Store at -80°C long term.

Note

For research use only.

Data Image



Western blot

Western blot analysis using LCK mouse mAb against MOLT-4 (1), CCRF-CEM (2), CCRF-HSB-2 (3) and Jurkat (4) cell lysate.