

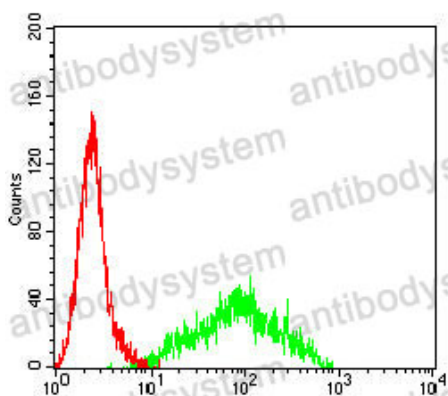
# Anti-CD220/INSR Antibody (R2Z57)

## Summary

---

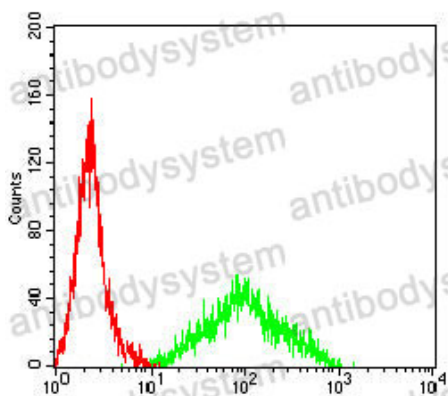
<b>Catalog No.</b>	RHC19102
<b>Clone ID</b>	R2Z57
<b>Host species</b>	Mouse
<b>Tested applications</b>	ELISA: 1:10000, FCM: 1:200-1:400, IF: 1:50-1:200, WB: 1:500-1:2000
<b>Species reactivity</b>	Human, Mouse, Monkey
<b>Form</b>	Liquid
<b>Storage buffer</b>	0.01M PBS, pH 7.4, 0.05% Sodium Azide.
<b>Concentration</b>	1 mg/ml
<b>Purity</b>	>95% as determined by SDS-PAGE.
<b>Clonality</b>	Monoclonal
<b>Isotype</b>	IgG2a
<b>Applications</b>	ELISA, FCM, IF, WB
<b>Target</b>	INSR, IR, CD220, Insulin receptor
<b>Purification</b>	Protein A/G purified from cell culture supernatant.
<b>Endotoxin level</b>	Please contact with the lab for this information.
<b>Accession</b>	P06213
<b>Stability and Storage</b>	Use a manual defrost freezer and avoid repeated freeze-thaw cycles. Store at 4°C short term (1-2 weeks). Store at -20°C 12 months. Store at -80°C long term.
<b>Note</b>	For research use only.

## Data Image



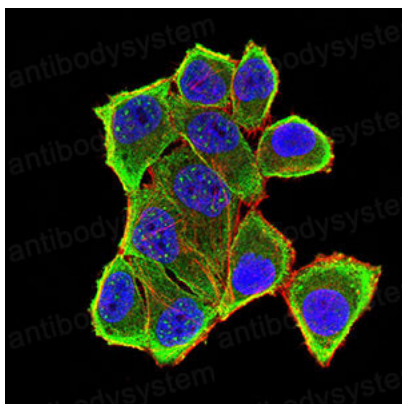
Flow Cytometry

Flow cytometric analysis of THP-1 cells using CD220 mouse mAb (green) and negative control (red).



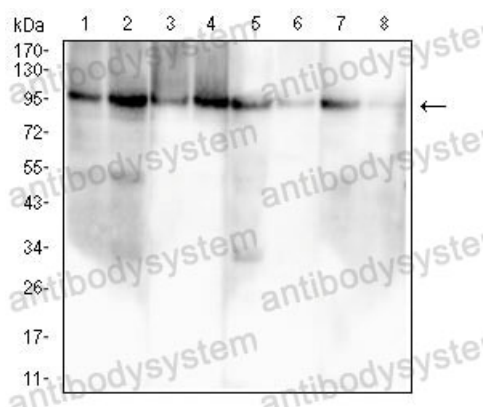
Flow Cytometry

Flow cytometric analysis of HL-60 cells using CD220 mouse mAb (green) and negative control (red).



Immunofluorescence

Immunofluorescence analysis of HeLa cells using CD220 mouse mAb (green). Blue: DRAQ5 fluorescent DNA dye. Red: Actin filaments have been labeled with Alexa Fluor-555 phalloidin.



Western blot

Western blot analysis using CD220 mouse mAb against HepG2 (1), HEK293 (2), Jurkat (3), Hela (4), THP-1 (5), NIH/3T3 (6), COS7 (7), and PC-3 (8) cell lysate.