

Anti-CD1a Antibody (R2Z51)

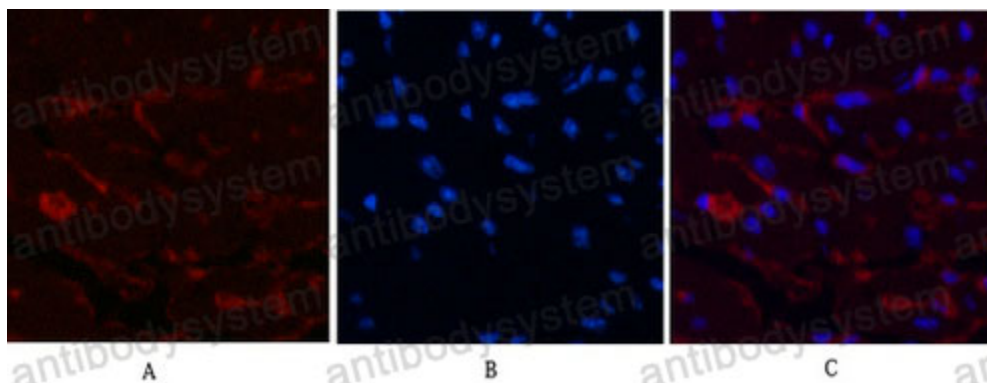
Summary

Catalog No.	RHC18706
Clone ID	R2Z51
Host species	Mouse
Tested applications	IHC: 1:50-1:100
Species reactivity	Human, Mouse, Rat
Form	Liquid
Storage buffer	0.01M PBS, pH 7.4, 0.5% BSA, 0.05% Sodium Azide and 50% Glycerol.
Concentration	1 mg/ml
Purity	>95% as determined by SDS-PAGE.
Clonality	Monoclonal
Isotype	IgG1
Applications	IHC
Target	T-cell surface glycoprotein CD1a, CD1A, T-cell surface antigen T6/Leu-6, CD1a, hTa1 thymocyte antigen
Purification	Protein A/G purified from cell culture supernatant.
Endotoxin level	Please contact with the lab for this information.
Accession	P06126
Stability and Storage	Use a manual defrost freezer and avoid repeated freeze-thaw cycles. Store at 4°C short term (1-2 weeks). Store at -20°C 12 months. Store at -80°C long term.

Note

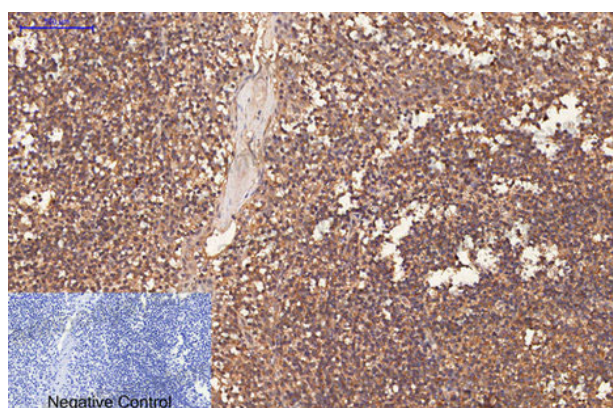
For research use only.

Data Image



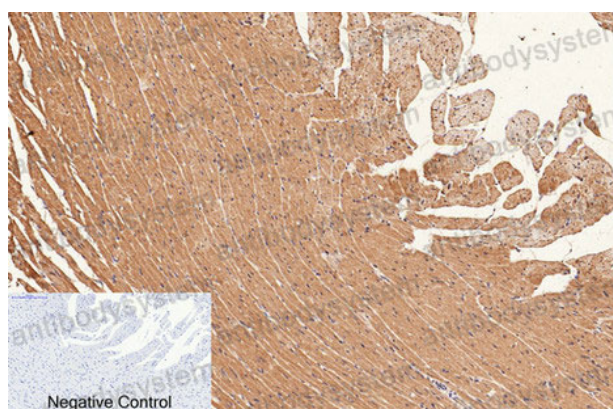
Immunofluorescence

Immunofluorescence analysis of CD1a in mouse heart tissue using CD1a antibody(9H6)(red),and DAPI (blue).



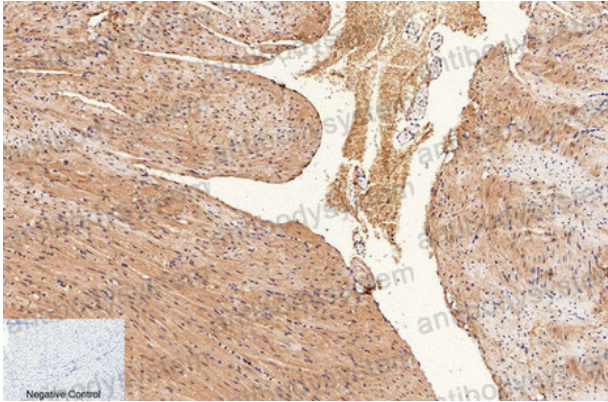
Immunohistochemical

Immunohistochemistry analysis of paraffin-embedded Human Tonsil tissue using CD1a antibody.High-pressure and temperature Sodium Citrate pH 6.0 was used for antigen retrieval.Negative control was used by secondary antibody only.



Immunohistochemical

Immunohistochemical analysis of paraffin-embedded Human tonsils using CD1a antibody.High-pressure and temperature Sodium Citrate pH 6.0 was used for antigen retrieval.Negative control was used by secondary antibody only.



Immunohistochemical

Immunohistochemistry analysis of paraffin-embedded mouse heart tissue using CD1a antibody. High-pressure and temperature Sodium Citrate pH 6.0 was used for antigen retrieval. Negative control was used by secondary antibody only.



Immunohistochemical

Immunohistochemistry analysis of paraffin-embedded Human tonsils using CD1a antibody. High-pressure and temperature Sodium Citrate pH 6.0 was used for antigen retrieval.



Immunohistochemical

Immunohistochemistry analysis of paraffin-embedded Human tonsils using CD1a antibody. High-pressure and temperature Sodium Citrate pH 6.0 was used for antigen retrieval.