

Anti-CD1a Antibody (R2Z50)

Summary

Catalog No.	RHC18705
Clone ID	R2Z50
Host species	Mouse
Tested applications	ELISA: 1:10000, FCM: 1:200-1:400, IF: 1:200-1:1000, IHC: 1:200-1:1000, WB: 1:500-1:2000
Species reactivity	Human, Mouse, Monkey
Form	Liquid
Storage buffer	0.01M PBS, pH 7.4, 0.05% Sodium Azide.
Concentration	1 mg/ml
Purity	>95% as determined by SDS-PAGE.
Clonality	Monoclonal
Isotype	IgG2a
Applications	ELISA, FCM, IF, IHC, WB
Target	T-cell surface glycoprotein CD1a, CD1A, T-cell surface antigen T6/Leu-6, CD1a, hTa1 thymocyte antigen
Purification	Protein A/G purified from cell culture supernatant.
Endotoxin level	Please contact with the lab for this information.
Accession	P06126

Stability and Storage

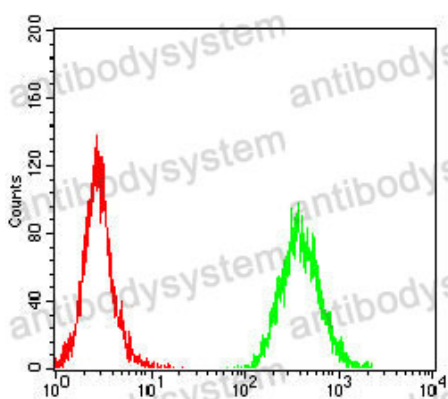
Use a manual defrost freezer and avoid repeated freeze-thaw cycles.

Store at 4°C short term (1-2 weeks). Store at -20°C 12 months. Store at -80°C long term.

Note

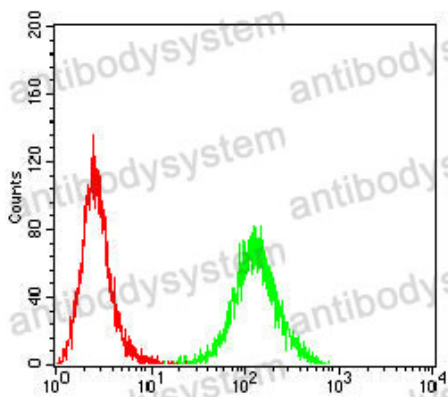
For research use only.

Data Image



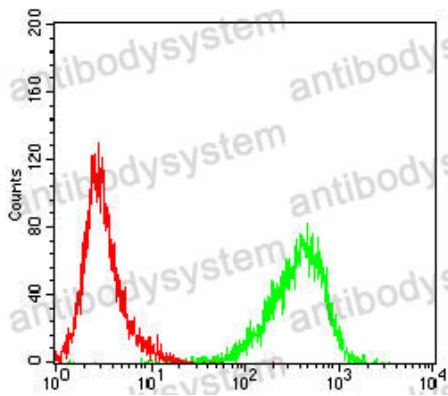
Flow Cytometry

Flow cytometric analysis of MOLT4 cells using CD1A mouse mAb (green) and negative control (red).



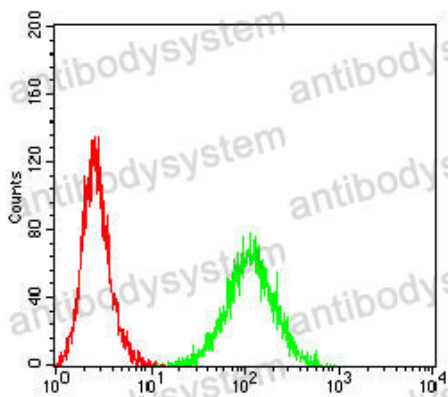
Flow Cytometry

Flow cytometric analysis of HL-60 cells using CD1A mouse mAb (green) and negative control (red).



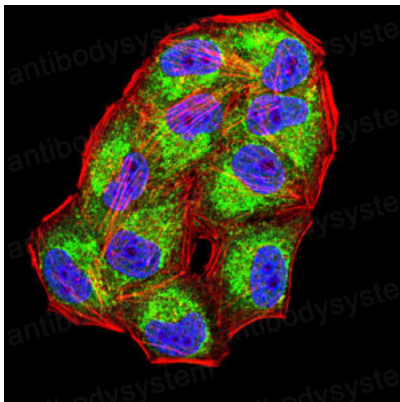
Flow Cytometry

Flow cytometric analysis of Jukrat cells using CD1A mouse mAb (green) and negative control (red).



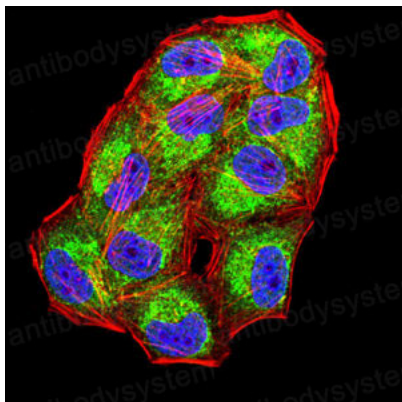
Flow Cytometry

Flow cytometric analysis of K562 cells using CD1A mouse mAb (green) and negative control (red).



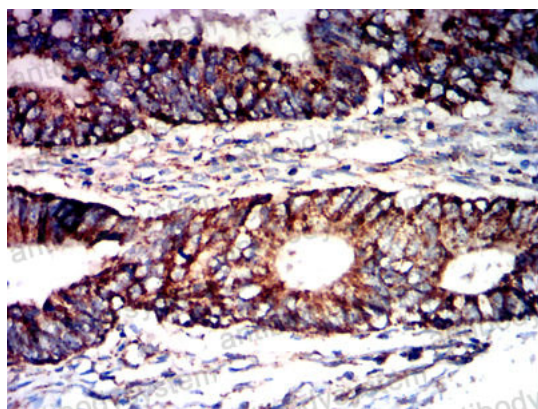
Immunofluorescence

Immunofluorescence analysis of HeLa cells using CD1A mouse mAb (green). Blue: DRAQ5 fluorescent DNA dye. Red: Actin filaments have been labeled with Alexa Fluor- 555 phalloidin.



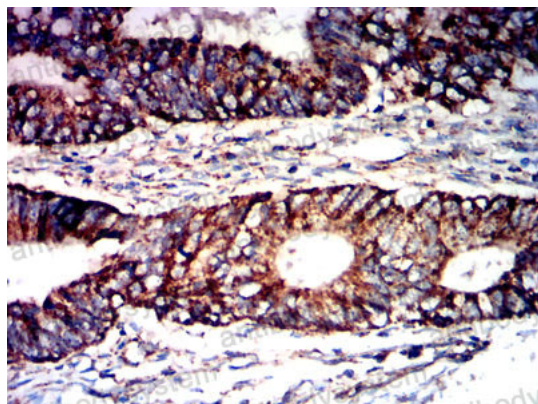
Immunofluorescence

Immunofluorescence analysis of HeLa cells using CD1A mouse mAb (green). Blue: DRAQ5 fluorescent DNA dye. Red: Actin filaments have been labeled with Alexa Fluor- 555 phalloidin.



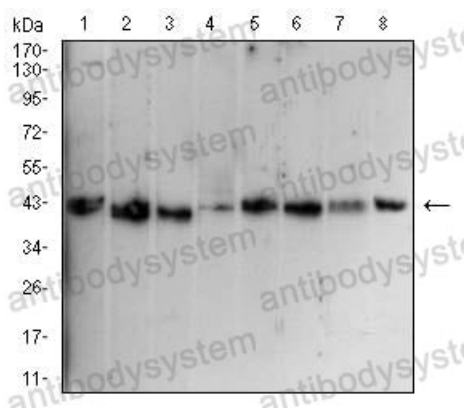
Immunohistochemical

Immunohistochemical analysis of paraffin-embedded human bladder cancer tissues using CD1A mouse mAb with DAB staining.



Immunohistochemical

Immunohistochemical analysis of paraffin-embedded human rectal cancer tissues using CD1A mouse mAb with DAB staining.



Western blot

Western blot analysis using CD1A mouse mAb against Hela (1), HepG2 (2), HEK293 (3), MOLT4 (4), K562 (5), HEK293-6e (6), Cos-7 (7), and NIH/3T3 (8) cell lysate.