

# Anti-KRT18 Antibody (R2Z43)

## Summary

---

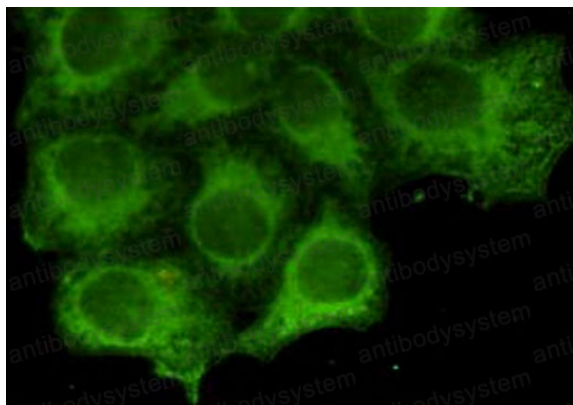
<b>Catalog No.</b>	RHC17805
<b>Clone ID</b>	R2Z43
<b>Host species</b>	Mouse
<b>Tested applications</b>	IF: 1:50-1:200, WB: 1:500-1:1000
<b>Species reactivity</b>	Human, Monkey
<b>Form</b>	Liquid
<b>Storage buffer</b>	0.01M PBS, pH 7.4, 0.5% BSA, 0.05% Sodium Azide and 50% Glycerol.
<b>Concentration</b>	1 mg/ml
<b>Purity</b>	>95% as determined by SDS-PAGE.
<b>Clonality</b>	Monoclonal
<b>Isotype</b>	IgG2a
<b>Applications</b>	IF, WB
<b>Target</b>	Cytokeratin-18, CYK18, K18, Keratin, type I cytoskeletal 18, KRT18, CK-18, Keratin-18, Cell proliferation-inducing gene 46 protein
<b>Purification</b>	Protein A/G purified from cell culture supernatant.
<b>Endotoxin level</b>	Please contact with the lab for this information.
<b>Accession</b>	P05783
<b>Stability and Storage</b>	Use a manual defrost freezer and avoid repeated freeze-thaw cycles. Store at 4°C short term (1-2 weeks). Store at -20°C 12 months. Store at -80°C long term.

**Note**

For research use only.

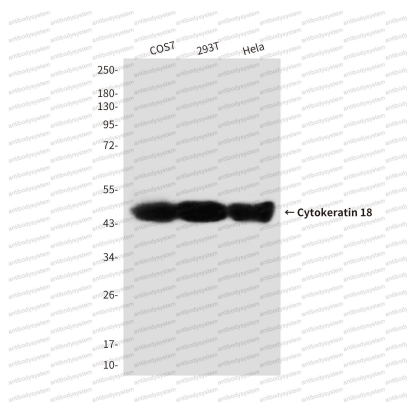
## Data Image

---



Immunofluorescence

Immunocytochemistry analysis of Cytokeratin 18 in HeLa using Keratin 18 antibody.



Western blot

Western blot analysis of Keratin 18 in HeLa, COS7 and 293T lysates using Keratin 18 antibody.