

# Anti-KRT18 Antibody (R2Z40)

## Summary

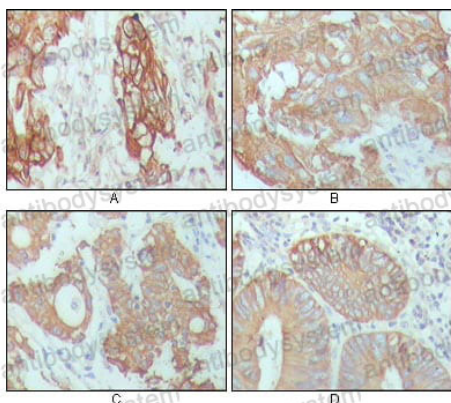
---

<b>Catalog No.</b>	RHC17802
<b>Clone ID</b>	R2Z40
<b>Host species</b>	Mouse
<b>Tested applications</b>	IHC: 1:200-1:1000, WB: 1:500-1:2000
<b>Species reactivity</b>	Human
<b>Form</b>	Liquid
<b>Storage buffer</b>	0.01M PBS, pH 7.4, 0.05% Sodium Azide.
<b>Concentration</b>	1 mg/ml
<b>Purity</b>	>95% as determined by SDS-PAGE.
<b>Clonality</b>	Monoclonal
<b>Isotype</b>	IgG2b
<b>Applications</b>	IHC, WB
<b>Target</b>	Cytokeratin-18, CYK18, K18, Keratin, type I cytoskeletal 18, KRT18, CK-18, Keratin-18, Cell proliferation-inducing gene 46 protein
<b>Purification</b>	Protein A/G purified from cell culture supernatant.
<b>Endotoxin level</b>	Please contact with the lab for this information.
<b>Accession</b>	P05783
<b>Stability and Storage</b>	Use a manual defrost freezer and avoid repeated freeze-thaw cycles. Store at 4°C short term (1-2 weeks). Store at -20°C 12 months. Store at -80°C long term.

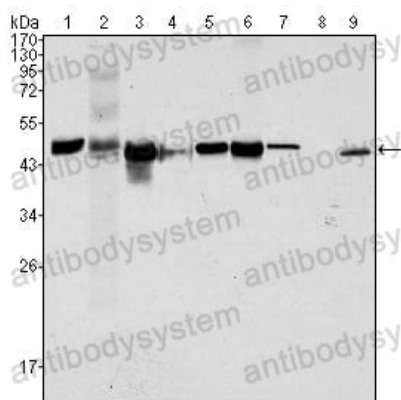
**Note**

For research use only.

## Data Image



Immunohistochemical



Western blot

Immunohistochemical analysis of paraffin-embedded human breast carcinoma (A), hepatocarcinoma (B), stomach cancer (C) and colon cancer tissue (D), showing cytoplasmic location with DAB staining using CK18 mouse mAb.

Western blot analysis using CK18 mouse mAb against Hela (1), NIH/3T3 (2), A549 (3), Jurkat (4), MCF-7(5), HepG2 (6), A431 (7), HEK293 (8) and K562 (9) cell lysate.