

Anti-CD29/ITGB1 Antibody (R2Z36)

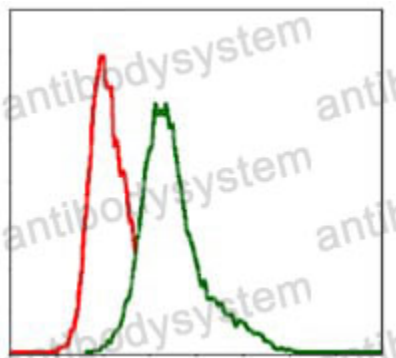
Summary

Catalog No.	RHC17604
Clone ID	R2Z36
Host species	Mouse
Tested applications	ELISA: 1:10000, FCM: 1:200-1:400, WB: 1:500-1:2000
Species reactivity	Human
Form	Liquid
Storage buffer	0.01M PBS, pH 7.4, 0.05% Sodium Azide.
Concentration	1 mg/ml
Purity	>95% as determined by SDS-PAGE.
Clonality	Monoclonal
Isotype	IgG1
Applications	ELISA, FCM, WB
Target	MSK12, VLA-4 subunit beta, CD29, Integrin beta-1, ITGB1, FN1R, MDFA, GPIIA, Glycoprotein IIA, Fibronectin receptor subunit beta
Purification	Protein A/G purified from cell culture supernatant.
Endotoxin level	Please contact with the lab for this information.
Accession	P05556
Stability and Storage	Use a manual defrost freezer and avoid repeated freeze-thaw cycles. Store at 4°C short term (1-2 weeks). Store at -20°C 12 months. Store at -80°C long term.

Note

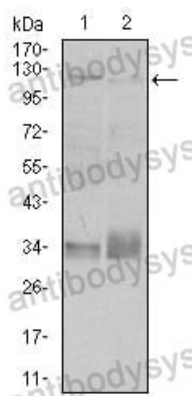
For research use only.

Data Image



Flow Cytometry

Flow cytometric analysis of MCF-7 cells using ITGB mouse mAb (green) and negative control (red).



Western blot

Western blot analysis using ITGB1 mouse mAb against A549 (1), and Jurkat (2) cell lysate.