

Anti-SSB Antibody (R2Z28)

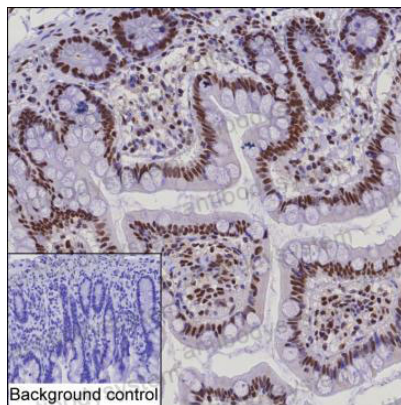
Summary

Catalog No.	RHC17001
Clone ID	R2Z28
Host species	Mouse
Tested applications	IHC: 1:100-1:200, IP: 1:100-1:200, WB: 1:500-1:1000
Species reactivity	Human
Form	Liquid
Storage buffer	0.01M PBS, pH 7.4, 0.05% Sodium Azide.
Concentration	1 mg/ml
Purity	>95% as determined by SDS-PAGE.
Clonality	Monoclonal
Isotype	IgG1
Applications	IHC, IP, WB
Target	Sjogren syndrome type B antigen, La autoantigen, SSB, Lupus La protein, La ribonucleoprotein, SS-B
Purification	Protein A/G purified from cell culture supernatant.
Endotoxin level	Please contact with the lab for this information.
Accession	P05455
Stability and Storage	Use a manual defrost freezer and avoid repeated freeze-thaw cycles. Store at 4°C short term (1-2 weeks). Store at -20°C 12 months. Store at -80°C long term.

Note

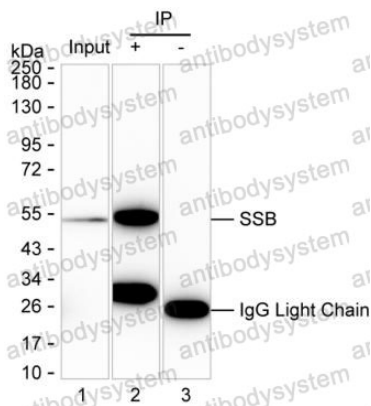
For research use only.

Data Image



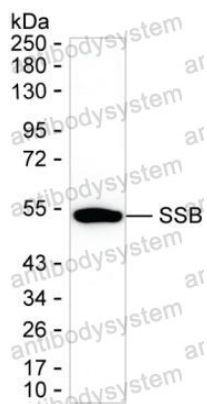
Immunohistochemical

IHC-P analysis of colon tissue by SSB antibody (RHC17001). IHC-P was performed using sections of the formalin-fixed paraffin-embedded colon tissue; Result: Glandular cells and lamina propria cell are positively stained at the nuclei.



Immunoprecipitation

Lane 1: K-562 lysate ; Lane 2: SSB immunoprecipitated from K-562 lysate by RHC17001; Lane 3: The same as Lane 2 but use IgG isotype control antibody ; Result: RHC17001 can immunoprecipitate SSB;



Western blot

Western blot analysis using SSB mouse mAb against K-562 lysate