

Anti-IL6 Antibody (R2Z16)

Summary

Catalog No.	RHC15805
Clone ID	R2Z16
Host species	Mouse
Tested applications	WB: 1:500-1:2000
Species reactivity	Human, Mouse, Rat, Monkey
Form	Liquid
Storage buffer	0.01M PBS, pH 7.4, 0.05% Sodium Azide.
Concentration	1 mg/ml
Purity	>95% as determined by SDS-PAGE.
Clonality	Monoclonal
Isotype	IgG1
Applications	WB
Target	Hybridoma growth factor, BSF-2, IFN-beta-2, CDF, IL6, Interleukin-6, IL-6, B-cell stimulatory factor 2, Interferon beta-2, IFNB2, CTL differentiation factor
Purification	Protein A/G purified from cell culture supernatant.
Endotoxin level	Please contact with the lab for this information.
Accession	P05231

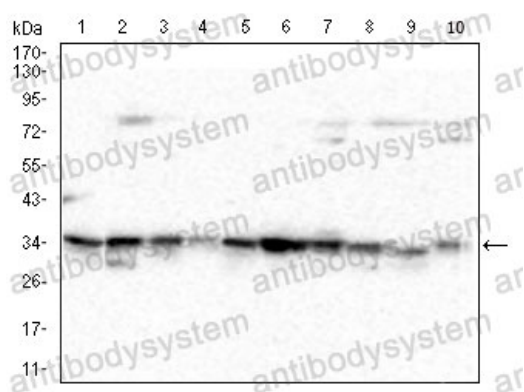
Stability and Storage

Use a manual defrost freezer and avoid repeated freeze-thaw cycles.

Store at 4°C short term (1-2 weeks). Store at -20°C 12 months. Store at -80°C long term.

Note

For research use only.

Data Image

Western blot

Western blot analysis using IL-6 mouse mAb against PC-12(1), NIH/3T3(2), NRK(3), C2C12(4), C6(5), L1210(6), F9(7), COS-7(8), CHO3D10(9), HUVEC(10) cell lysate.