

Anti-EIF2S1/eIF2A Antibody (R2Z15)

Summary

Catalog No.	RHC15504
Clone ID	R2Z15
Host species	Mouse
Tested applications	IF: 1:50-1:200, IP: 1:20, WB: 1:500-1:1000
Species reactivity	Human, Mouse, Rat
Form	Liquid
Storage buffer	0.01M PBS, pH 7.4, 0.5% BSA, 0.05% Sodium Azide and 50% Glycerol.
Concentration	1 mg/ml
Purity	>95% as determined by SDS-PAGE.
Clonality	Monoclonal
Isotype	IgG2b
Applications	IF, IP, WB
Target	EIF2A, eIF-2A, Eukaryotic translation initiation factor 2 subunit alpha, Eukaryotic translation initiation factor 2 subunit 1, EIF2S1, eIF-2-alpha, eIF-2alpha
Purification	Protein A/G purified from cell culture supernatant.
Endotoxin level	Please contact with the lab for this information.
Accession	P05198

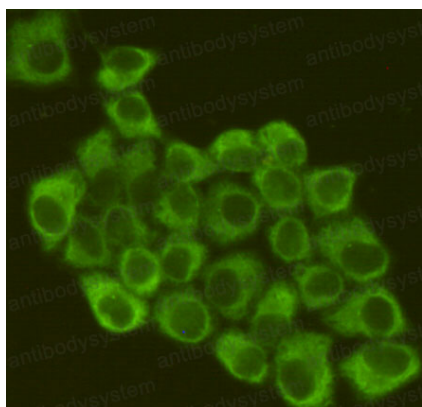
Stability and Storage

Use a manual defrost freezer and avoid repeated freeze-thaw cycles.

Store at 4°C short term (1-2 weeks). Store at -20°C 12 months. Store at -80°C long term.

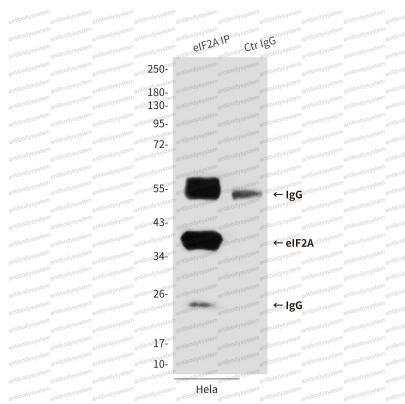
Note

For research use only.

Data Image

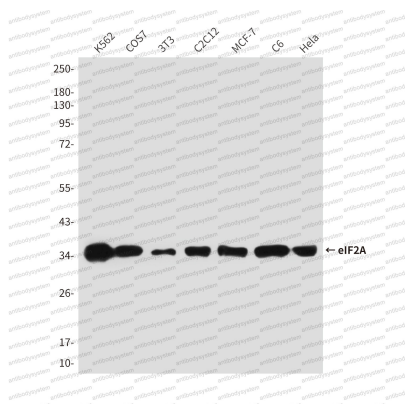
Immunofluorescence

Immunofluorescence analysis of eIF2A in HeLa using eIF2α antibody.



Immunoprecipitation

Immunoprecipitation analysis of eIF2A in HeLa lysates using eIF2α antibody.



Western blot

Western blot analysis of eIF2 α in K562, COS7, 3T3, C2C12, MCF-7, C6 and HeLa lysates using eIF2 α antibody.