

# Anti-EIF2S1 Antibody (R2Z14)

## Summary

---

<b>Catalog No.</b>	RHC15503
<b>Clone ID</b>	R2Z14
<b>Host species</b>	Mouse
<b>Tested applications</b>	IHC: 1:500
<b>Species reactivity</b>	Human
<b>Form</b>	Liquid
<b>Storage buffer</b>	0.01M PBS, pH 7.4, 0.05% Sodium Azide.
<b>Concentration</b>	1 mg/ml
<b>Purity</b>	>95% as determined by SDS-PAGE.
<b>Clonality</b>	Monoclonal
<b>Isotype</b>	IgG2b
<b>Applications</b>	IHC
<b>Target</b>	EIF2A, eIF-2A, Eukaryotic translation initiation factor 2 subunit alpha, Eukaryotic translation initiation factor 2 subunit 1, EIF2S1, eIF-2-alpha, eIF-2alpha
<b>Purification</b>	Protein A/G purified from cell culture supernatant.
<b>Endotoxin level</b>	Please contact with the lab for this information.
<b>Accession</b>	P05198

**Stability and Storage**

Use a manual defrost freezer and avoid repeated freeze-thaw cycles.

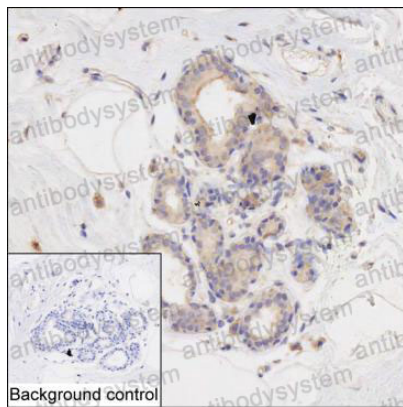
Store at 4°C short term (1-2 weeks). Store at -20°C 12 months. Store at -80°C long term.

**Note**

For research use only.

## Data Image

---



Immunohistochemical

IHC-P analysis of breast tissue by EIF2S1 antibody (RHC15503). IHC-P was performed using sections of the formalin-fixed paraffin-embedded mammary gland tissue; Result: Cells in conduits, vascular endothelial cells, a part of cells in connective tissue and glandular cells are positively stained at the cytoplasm.