

Anti-ALPP/PLAP Antibody (R2Z13)

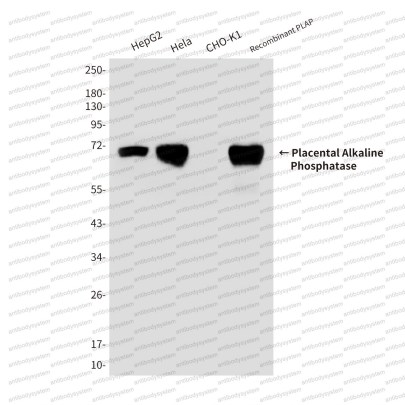
Summary

Catalog No.	RHC15405
Clone ID	R2Z13
Host species	Mouse
Tested applications	WB: 1:500-1:1000
Species reactivity	Human
Form	Liquid
Storage buffer	0.01M PBS, pH 7.4, 0.5% BSA, 0.05% Sodium Azide and 50% Glycerol.
Concentration	1 mg/ml
Purity	>95% as determined by SDS-PAGE.
Clonality	Monoclonal
Isotype	IgG1
Applications	WB
Target	PLAP-1, ALPP, Placental alkaline phosphatase 1, PLAP, Alkaline phosphatase Regan isozyme, Alkaline phosphatase, placental type
Purification	Protein A/G purified from cell culture supernatant.
Endotoxin level	Please contact with the lab for this information.
Accession	P05187
Stability and Storage	Use a manual defrost freezer and avoid repeated freeze-thaw cycles. Store at 4°C short term (1-2 weeks). Store at -20°C 12 months. Store at -80°C long term.

Note

For research use only.

Data Image

**Western blot**

Western blot analysis of Placental Alkaline Phosphatase in HepG2, Hela, CHO-K1 and CHO-K1 transfected pcDNA3.1HAPLAP lysates using Placental alkaline phosphatase (PLAP) antibody.