

Anti-ALPP/PLAP Antibody (R2Z12)

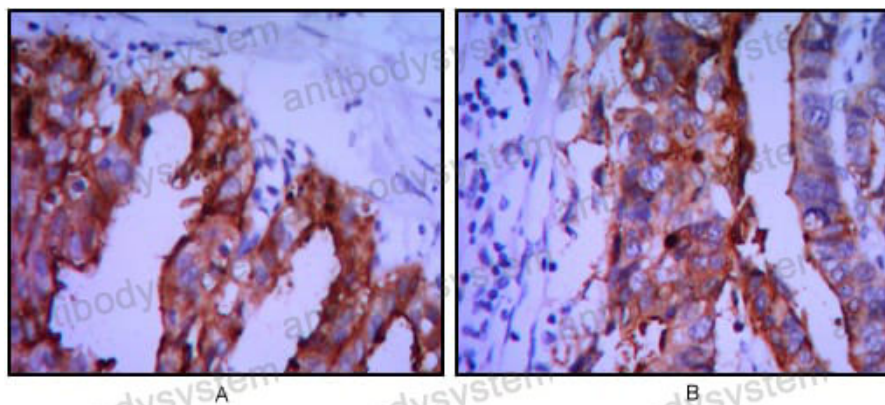
Summary

Catalog No.	RHC15404
Clone ID	R2Z12
Host species	Mouse
Tested applications	IHC: 1:200-1:1000, WB: 1:500-1:2000
Species reactivity	Human
Form	Liquid
Storage buffer	0.01M PBS, pH 7.4, 0.05% Sodium Azide.
Concentration	1 mg/ml
Purity	>95% as determined by SDS-PAGE.
Clonality	Monoclonal
Isotype	IgG2b
Applications	IHC, WB
Target	PLAP-1, ALPP, Placental alkaline phosphatase 1, PLAP, Alkaline phosphatase Regan isozyme, Alkaline phosphatase, placental type
Purification	Protein A/G purified from cell culture supernatant.
Endotoxin level	Please contact with the lab for this information.
Accession	P05187
Stability and Storage	Use a manual defrost freezer and avoid repeated freeze-thaw cycles. Store at 4°C short term (1-2 weeks). Store at -20°C 12 months. Store at -80°C long term.

Note

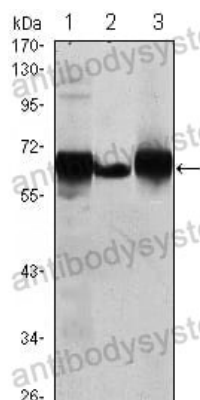
For research use only.

Data Image



Immunohistochemical analysis of paraffin-embedded human ovarian cancer (A), stomach cancer (B) using ALPP mouse mAb with DAB staining.

Immunohistochemical



Western blot analysis using ALPP mouse mAb against HepG2 (1), A431 (2) and MCF-7 (3) cell lysate.

Western blot