

Anti-LGALS2 Antibody (R2Z10)

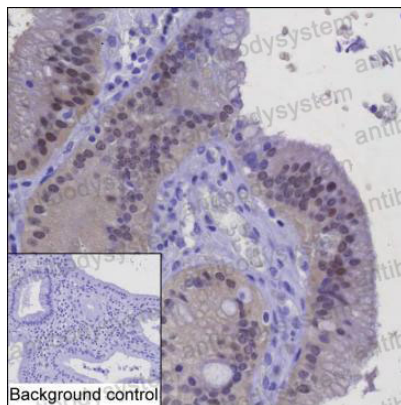
Summary

Catalog No.	RHC14701
Clone ID	R2Z10
Host species	Mouse
Tested applications	IHC: 1:100-1:200, IP: 1:100-1:200, WB: 1:500-1:1000
Species reactivity	Human
Form	Liquid
Storage buffer	0.01M PBS, pH 7.4, 0.05% Sodium Azide.
Concentration	1 mg/ml
Purity	>95% as determined by SDS-PAGE.
Clonality	Monoclonal
Isotype	IgG1
Applications	IHC, IP, WB
Target	HL14, Galectin-2, Lactose-binding lectin 2, S-Lac lectin 2, Beta-galactoside-binding lectin L-14-II, LGALS2, Gal-2
Purification	Protein A/G purified from cell culture supernatant.
Endotoxin level	Please contact with the lab for this information.
Accession	P05162
Stability and Storage	Use a manual defrost freezer and avoid repeated freeze-thaw cycles. Store at 4°C short term (1-2 weeks). Store at -20°C 12 months. Store at -80°C long term.

Note

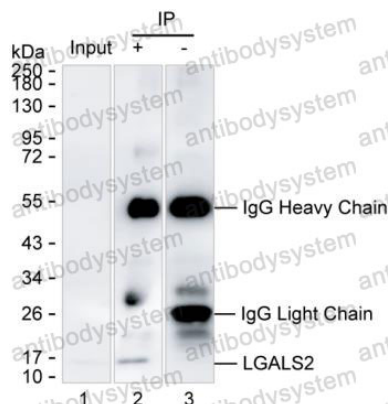
For research use only.

Data Image



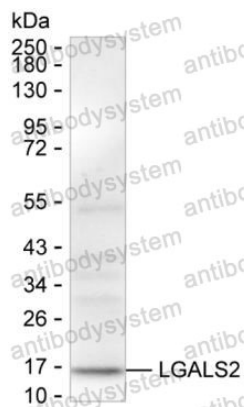
Immunohistochemical

IHC-P analysis of gallbladder tissue by LGALS2 antibody (RHC14701). IHC-P was performed using sections of the formalin-fixed paraffin-embedded gallbladder tissue; Result: Glandular cells are positively stained at the cytoplasm and nuclei.



Immunoprecipitation

Lane 1: Kidney tissue lysate ; Lane 2: LGALS2 immunoprecipitated from kidney tissue lysate by RHC14701; Lane 3: The same as Lane 2 but use IgG isotype control antibody ; Result: RHC14701 can immunoprecipitate LGALS2;



Western blot

Western blot analysis using LGALS2 mouse mAb
against kidney tissue lysate