

# Anti-SERPING1 Antibody (R2Z09)

## Summary

---

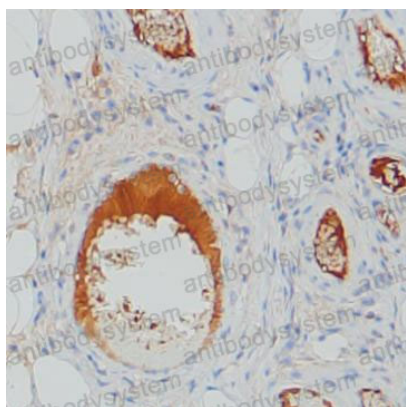
<b>Catalog No.</b>	RHC14302
<b>Clone ID</b>	R2Z09
<b>Host species</b>	Mouse
<b>Tested applications</b>	IHC: 1:500, WB: 1:500-1:1000
<b>Species reactivity</b>	Human
<b>Form</b>	Liquid
<b>Storage buffer</b>	0.01M PBS, pH 7.4, 0.05% Sodium Azide.
<b>Concentration</b>	1 mg/ml
<b>Purity</b>	>95% as determined by SDS-PAGE.
<b>Clonality</b>	Monoclonal
<b>Isotype</b>	IgG1
<b>Applications</b>	IHC, WB
<b>Target</b>	Serpin G1, SERPING1, C1Inh, C1 esterase inhibitor, Plasma protease C1 inhibitor, C1IN, C1 Inh, C1NH, C1-inhibiting factor
<b>Purification</b>	Protein A/G purified from cell culture supernatant.
<b>Endotoxin level</b>	Please contact with the lab for this information.
<b>Accession</b>	P05155
<b>Stability and Storage</b>	Use a manual defrost freezer and avoid repeated freeze-thaw cycles. Store at 4°C short term (1-2 weeks). Store at -20°C 12 months. Store at -80°C long term.

**Note**

For research use only.

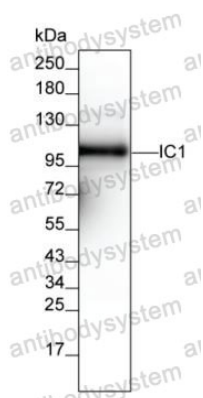
## Data Image

---



Immunohistochemical

IHC-P analysis in stomach by SERPING1 antibody (RHC14302). Immunohistochemistry was performed using sections of the formalin-fixed paraffin-embedded stomach; Result: Plasma are positively stained.



Western blot

Western blot analysis using human SERPING1 mouse mAb against human plasma lysate