

# Anti-INHA Antibody (R2Z06)

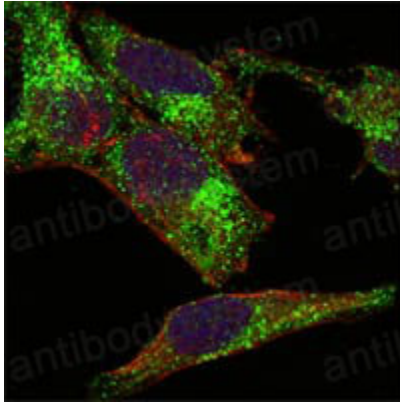
## Summary

---

<b>Catalog No.</b>	RHC13402
<b>Clone ID</b>	R2Z06
<b>Host species</b>	Mouse
<b>Tested applications</b>	IF: 1:200-1:1000, IHC: 1:200-1:1000
<b>Species reactivity</b>	Human
<b>Form</b>	Liquid
<b>Storage buffer</b>	0.01M PBS, pH 7.4, 0.05% Sodium Azide.
<b>Concentration</b>	1 mg/ml
<b>Purity</b>	>95% as determined by SDS-PAGE.
<b>Clonality</b>	Monoclonal
<b>Isotype</b>	IgG1
<b>Applications</b>	IF, IHC
<b>Target</b>	Inhibin alpha chain, INHA
<b>Purification</b>	Protein A/G purified from cell culture supernatant.
<b>Endotoxin level</b>	Please contact with the lab for this information.
<b>Accession</b>	P05111
<b>Stability and Storage</b>	Use a manual defrost freezer and avoid repeated freeze-thaw cycles. Store at 4°C short term (1-2 weeks). Store at -20°C 12 months. Store at -80°C long term.
<b>Note</b>	For research use only.

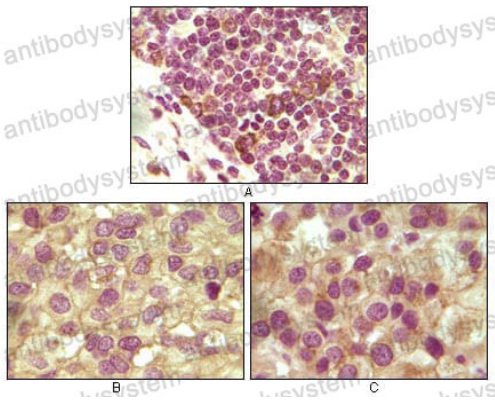
## Data Image

---



Immunofluorescence

Confocal Immunofluorescence analysis of HeLa cells using INHA mouse mAb (green). Red: Actin filaments have been labeled with DY-554 phalloidin. Blue: DRAQ5 fluorescent DNA dye.



Immunohistochemical

Immunohistochemical analysis of paraffin-embedded human lymphoid (A), ovary tumor (B) and testicle tumor (C) tissues using INHA mouse mAb with DAB staining.