

# Anti-CD18/ITGB2 Antibody (R2Z04)

## Summary

---

|                            |   |
|----------------------------|---|
| <b>Catalog No.</b>         | RHC13106  |
| <b>Clone ID</b>            | R2Z04   |
| <b>Host species</b>        | Mouse   |
| <b>Tested applications</b> | ELISA: 1:10000, FCM: 1:200-1:400, WB: 1:500-1:2000  |
| <b>Species reactivity</b>  | Human   |
| <b>Form</b>                | Liquid  |
| <b>Storage buffer</b>      | 0.01M PBS, pH 7.4, 0.05% Sodium Azide.  |
| <b>Concentration</b>       | 1 mg/ml   |
| <b>Purity</b>              | >95% as determined by SDS-PAGE.   |
| <b>Clonality</b>           | Monoclonal  |
| <b>Isotype</b>             | IgG1  |
| <b>Applications</b>        | ELISA, FCM, WB  |
| <b>Target</b>              | Complement receptor C3 subunit beta, Cell surface adhesion glycoproteins LFA-1/CR3/p150,95 subunit beta, Integrin beta-2, MFI7, CD18, ITGB2 |
| <b>Purification</b>        | Protein A/G purified from cell culture supernatant.   |
| <b>Endotoxin level</b>     | Please contact with the lab for this information.   |
| <b>Accession</b>           | P05107  |

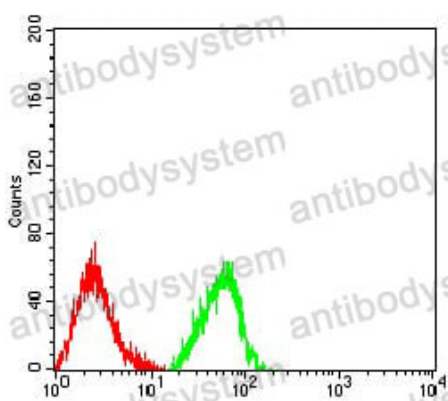
**Stability and Storage**

Use a manual defrost freezer and avoid repeated freeze-thaw cycles.

Store at 4°C short term (1-2 weeks). Store at -20°C 12 months. Store at -80°C long term.

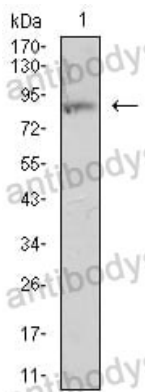
**Note**

For research use only.

**Data Image**

Flow Cytometry

Flow cytometric analysis of HL-60 cells using CD18 mouse mAb (green) and negative control (red).



Western blot

Western blot analysis using CD18 mouse mAb against HL-60 (1) cell lysate.