

# Anti-ALDH2 Antibody (R2Z01)

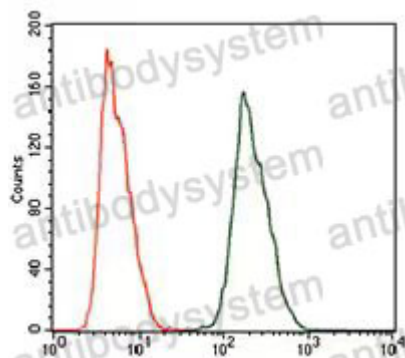
## Summary

---

<b>Catalog No.</b>	RHC12802
<b>Clone ID</b>	R2Z01
<b>Host species</b>	Mouse
<b>Tested applications</b>	FCM: 1:200-1:400, IF: 1:50-1:500, IHC: 1:100-1:500, WB: 1:500-1:2000
<b>Species reactivity</b>	Human, Mouse, Rat, Rabbit, Monkey
<b>Form</b>	Liquid
<b>Storage buffer</b>	0.01M PBS, pH 7.4, 0.05% Sodium Azide.
<b>Concentration</b>	1 mg/ml
<b>Purity</b>	>95% as determined by SDS-PAGE.
<b>Clonality</b>	Monoclonal
<b>Isotype</b>	IgG1
<b>Applications</b>	FCM, IF, IHC, WB
<b>Target</b>	ALDH-E2, Aldehyde dehydrogenase, mitochondrial, ALDM, ALDH2, ALDH class 2, ALDHI
<b>Purification</b>	Protein A/G purified from cell culture supernatant.
<b>Endotoxin level</b>	Please contact with the lab for this information.
<b>Accession</b>	P05091
<b>Stability and Storage</b>	Use a manual defrost freezer and avoid repeated freeze-thaw cycles. Store at 4°C short term (1-2 weeks). Store at -20°C 12 months. Store at -80°C long term.

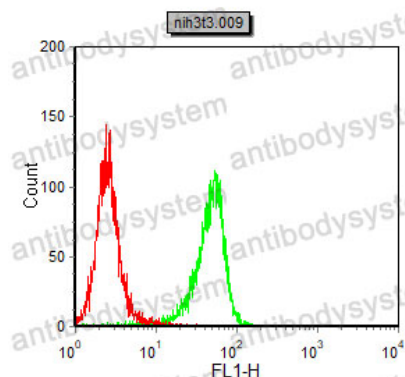
**Note** For research use only.

## Data Image



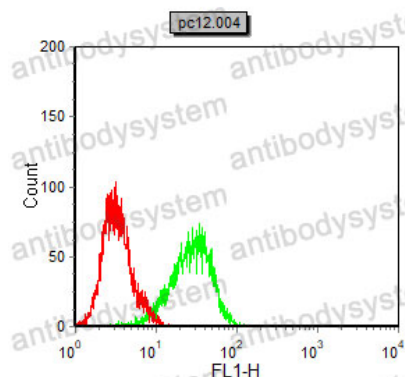
Flow Cytometry

Flow cytometric analysis of HeLa cells using mouse mAb (green) and negative control (red).



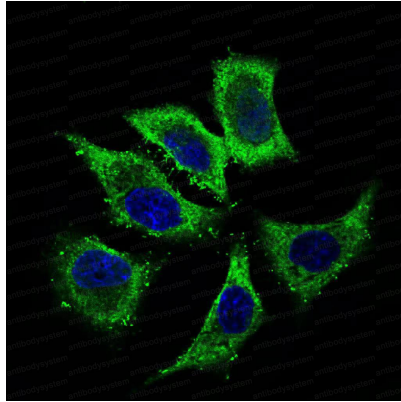
Flow Cytometry

Flow cytometric analysis of NIH/3T3 cells using mouse mAb (green) and negative control (red).



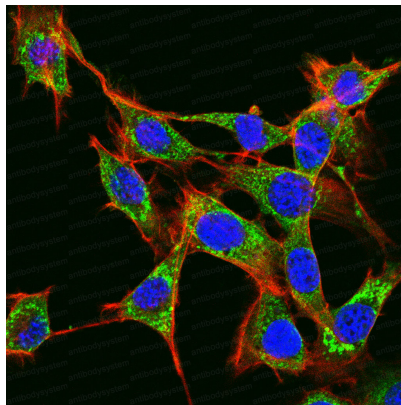
Flow Cytometry

Flow cytometric analysis of PC-12 cells using mouse mAb (green) and negative control (red).



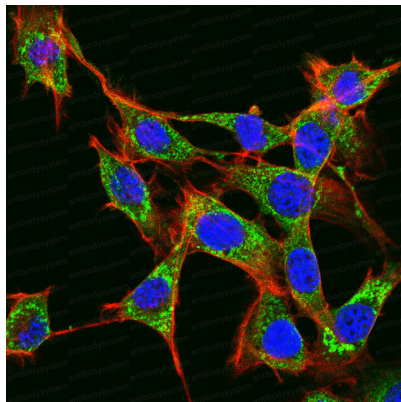
Immunofluorescence

Immunofluorescence analysis of HepG2 cells showing green fluorescence (mouse mAb), blue fluorescence (DRAQ5), and red fluorescence (Actin filaments labeled with 555phalloidin).



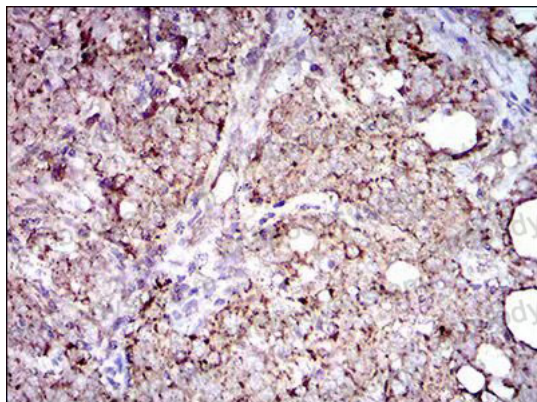
Immunofluorescence

Immunofluorescence analysis of NIH/3T3 cells showing green fluorescence (mouse mAb), blue fluorescence (DRAQ5), and red fluorescence (Actin filaments labeled with 555 phalloidin).



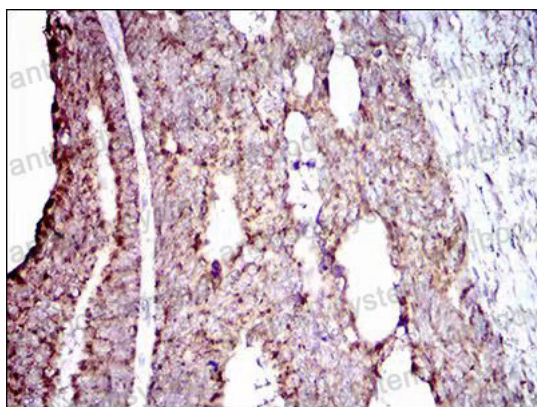
Immunofluorescence

Immunofluorescence analysis of NIH/3T3 cells showing green fluorescence (mouse mAb), blue fluorescence (DRAQ5), and red fluorescence (Actin filaments labeled with 555 phalloidin).



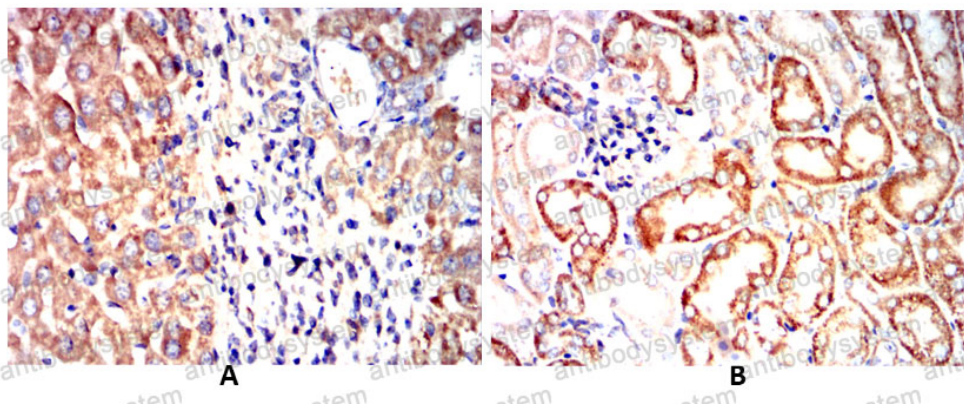
Immunohistochemical

Immunohistochemical analysis of paraffin-embedded cervical cancer tissues using ALDH2 mouse monoclonal antibody staining.



Immunohistochemical

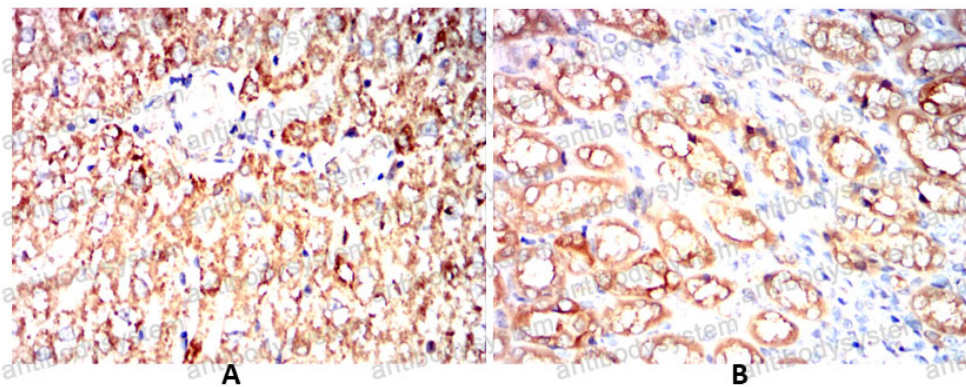
Immunohistochemical analysis of paraffin-embedded rectum cancer tissues using ALDH2 mouse monoclonal antibody staining.



Immunohistochemical

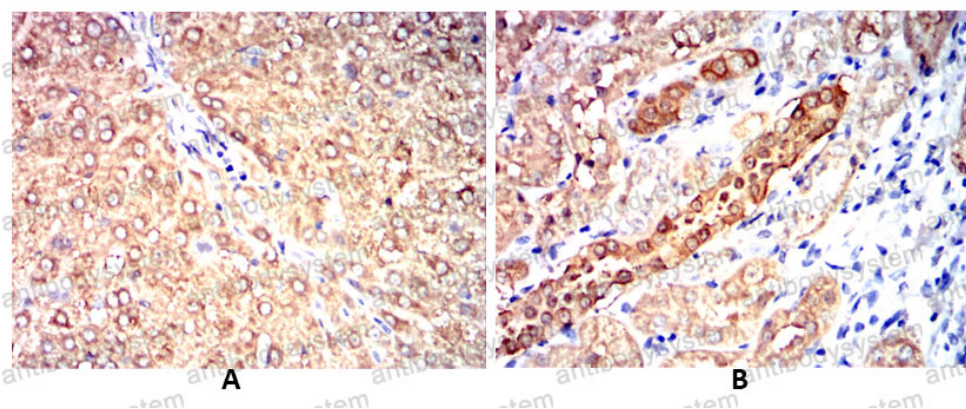
Immunohistochemical analysis of paraffin-embedded mouse liver (A) and mouse kidney (B) using ALDH2 mouse monoclonal antibody staining with DAB staining.





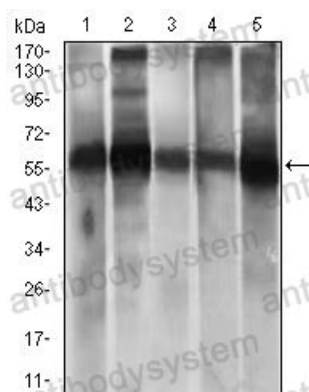
Immunohistochemical analysis of paraffin liver(A) Rat kidney(B) using ALDH2 mouse antibody with DAB staining.

Immunohistochemical



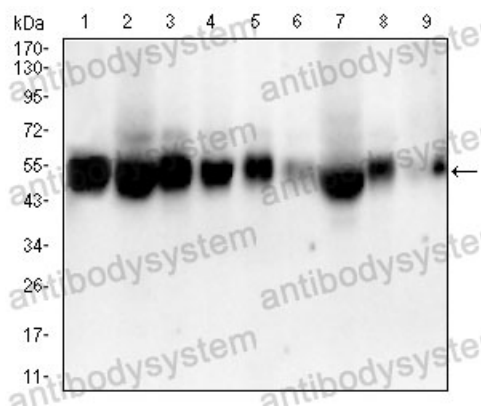
Immunohistochemical analysis of paraffin Rabbit liver(A) Rabbit kidney(B) using ALDH2 mouse antibody with DAB staining.

Immunohistochemical



Western blot analysis using ALDH2 mouse antibody. HepG2(1), A549 (2) cell lysate and Rat liver (4), Mouse brain (5) tissue lysate.

Western blot



Western blot

Western blot analysis using ALDH2 mouse  
mouse  
liver(1)Raw264.7(2)NIH/3T3(3)NRK(4)C2C  
12(5)CHO(6)CHO3D10(7)CHO3D10(8)CHO3D10(9)cell lysate.