

# Anti-CD340/ERBB2/HER2/NEU Antibody (R2Y78)

## Summary

---

<b>Catalog No.</b>	RHC09609
<b>Clone ID</b>	R2Y78
<b>Host species</b>	Mouse
<b>Tested applications</b>	FCM: 1:200-1:400, IHC: 1:200-1:1000, WB: 1:500-1:2000
<b>Species reactivity</b>	Human
<b>Form</b>	Liquid
<b>Storage buffer</b>	0.01M PBS, pH 7.4, 0.05% Sodium Azide.
<b>Concentration</b>	1 mg/ml
<b>Purity</b>	>95% as determined by SDS-PAGE.
<b>Clonality</b>	Monoclonal
<b>Isotype</b>	IgG1
<b>Applications</b>	FCM, IHC, WB
<b>Target</b>	p185erbB2, HER2, NGL, Tyrosine kinase-type cell surface receptor HER2, NEU, MLN 19, Proto-oncogene Neu, MLN19, ERBB2, Proto-oncogene c-ErbB-2, CD340, Receptor tyrosine-protein kinase erbB-2, Metastatic lymph node gene 19 protein
<b>Purification</b>	Protein A/G purified from cell culture supernatant.
<b>Endotoxin level</b>	Please contact with the lab for this information.
<b>Accession</b>	P04626

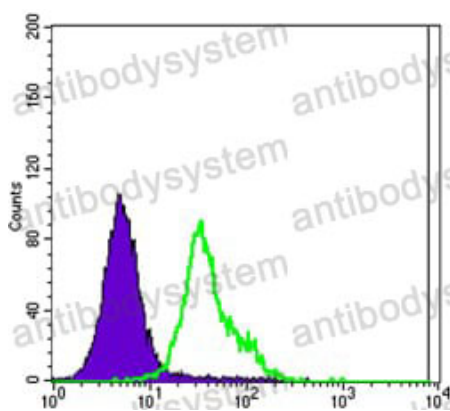
**Stability and Storage**

Use a manual defrost freezer and avoid repeated freeze-thaw cycles.

Store at 4°C short term (1-2 weeks). Store at -20°C 12 months. Store at -80°C long term.

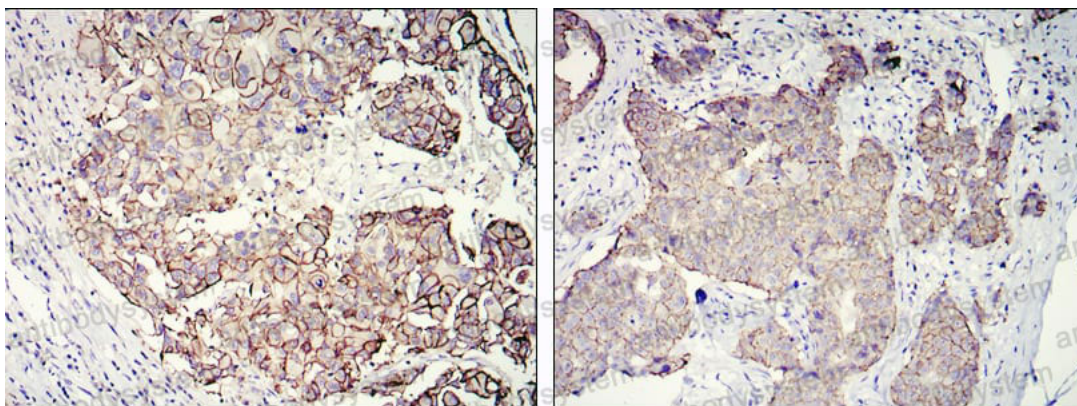
**Note**

For research use only.

**Data Image**

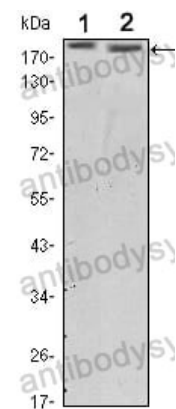
Flow Cytometry

Flow cytometric analysis of MCF-7 cells using ERBB2 mouse mAb (green) and negative control (purple).



Immunohistochemical

Immunohistochemical analysis of paraffin-embedded human galactophore tumour using ERBB2 mouse mAb with DAB staining



Western blot

Western blot analysis  
using ERBB2 mouse  
mAb against SKBR3 (1)  
and MCF-7 (2) cell lysate.