

Anti-KRT1 Antibody (R2Y71)

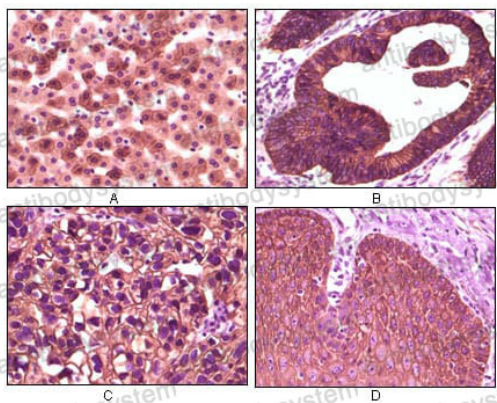
Summary

Catalog No.	RHC08301
Clone ID	R2Y71
Host species	Mouse
Tested applications	IHC: 1:200-1:1000
Species reactivity	Human
Form	Liquid
Storage buffer	0.01M PBS, pH 7.4, 0.05% Sodium Azide.
Concentration	1 mg/ml
Purity	>95% as determined by SDS-PAGE.
Clonality	Monoclonal
Isotype	IgG1
Applications	IHC
Target	K1, KRT1, Type-II keratin Kb1, Hair alpha protein, Cytokeratin-1, Keratin-1, CK-1, KRTA, Keratin, type II cytoskeletal 1, 67 kDa cytokeratin
Purification	Protein A/G purified from cell culture supernatant.
Endotoxin level	Please contact with the lab for this information.
Accession	P04264
Stability and Storage	Use a manual defrost freezer and avoid repeated freeze-thaw cycles. Store at 4°C short term (1-2 weeks). Store at -20°C 12 months. Store at -80°C long term.

Note

For research use only.

Data Image



Immunohistochemical analysis of paraffin-embedded human liver tissue (A), colon carcinoma (B), lung carcinoma (C) and esophagus tissue (D), showing membrane localization using CK1 mouse mAb with DAB staining.

Immunohistochemical