

Anti-NR3C1 Antibody (R2Y58)

Summary

Catalog No.	RHC06803
Clone ID	R2Y58
Host species	Mouse
Tested applications	ELISA: 1:10000, FCM: 1:200-1:400, IF: 1:200-1:1000, IHC: 1:200-1:1000, WB: 1:500-1:2000
Species reactivity	Human
Form	Liquid
Storage buffer	0.01M PBS, pH 7.4, 0.05% Sodium Azide.
Concentration	1 mg/ml
Purity	>95% as determined by SDS-PAGE.
Clonality	Monoclonal
Isotype	IgG1
Applications	ELISA, FCM, IF, IHC, WB
Target	GR, NR3C1, Nuclear receptor subfamily 3 group C member 1, GRL, Glucocorticoid receptor
Purification	Protein A/G purified from cell culture supernatant.
Endotoxin level	Please contact with the lab for this information.
Accession	P04150

Stability and Storage

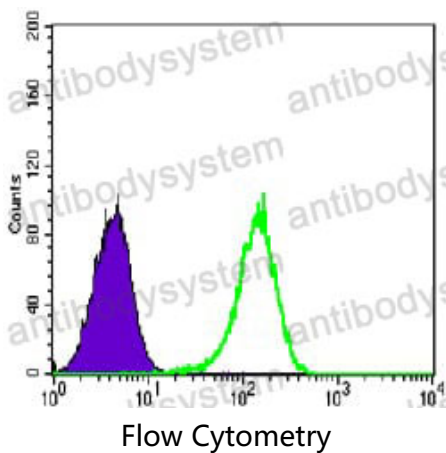
Use a manual defrost freezer and avoid repeated freeze-thaw cycles.

Store at 4°C short term (1-2 weeks). Store at -20°C 12 months. Store at -80°C long term.

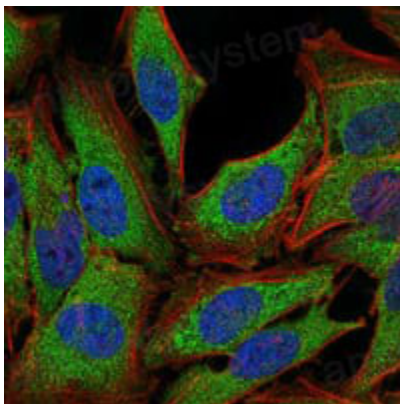
Note

For research use only.

Data Image

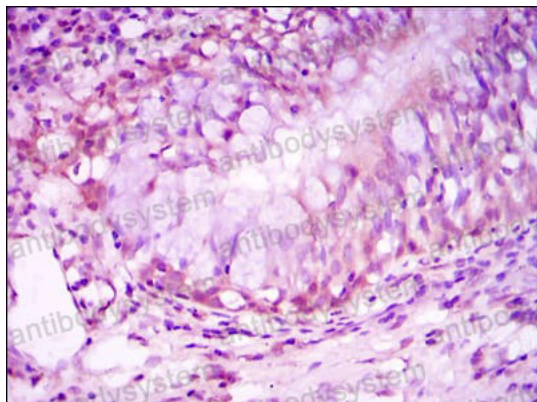


Flow cytometric analysis of K562 cells using NR3C1 mouse mAb (green) and negative control (purple).



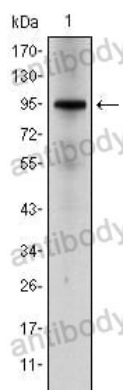
Immunofluorescence

Immunofluorescence analysis of PC-2 cells using NR3C1 mouse mAb (green). Blue: DRAQ5 fluorescent DNA dye. Red: Actin filaments have been labeled with Alexa Fluor-555 phalloidin.



Immunohistochemical

Immunohistochemical analysis of paraffin-embedded human lung cancer tissues using NR3C1 mouse mAb with DAB staining.



Western blot

Western blot analysis using NR3C1 mouse mAb against Hela cell lysate.