

Anti-ALDOA Antibody (R2Y50)

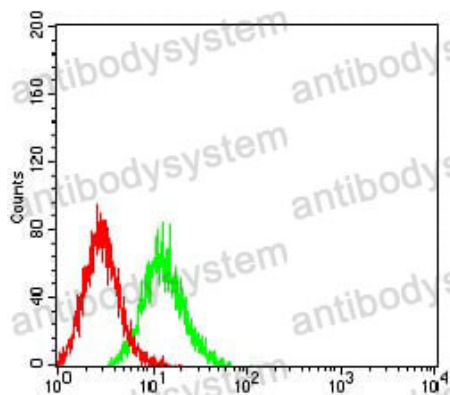
Summary

Catalog No.	RHC06002
Clone ID	R2Y50
Host species	Mouse
Tested applications	ELISA: 1:10000, FCM: 1:200-1:400, IHC: 1:200-1:1000, WB: 1:500-1:2000
Species reactivity	Human, Mouse
Form	Liquid
Storage buffer	0.01M PBS, pH 7.4, 0.05% Sodium Azide.
Concentration	1 mg/ml
Purity	>95% as determined by SDS-PAGE.
Clonality	Monoclonal
Isotype	IgG2a
Applications	ELISA, FCM, IHC, WB
Target	Fructose-bisphosphate aldolase A, ALDA, Muscle-type aldolase, Lung cancer antigen NY-LU-1, ALDOA
Purification	Protein A/G purified from cell culture supernatant.
Endotoxin level	Please contact with the lab for this information.
Accession	P04075
Stability and Storage	Use a manual defrost freezer and avoid repeated freeze-thaw cycles. Store at 4°C short term (1-2 weeks). Store at -20°C 12 months. Store at -80°C long term.

Note

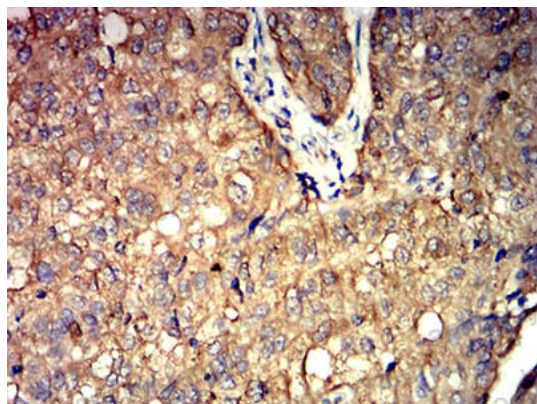
For research use only.

Data Image



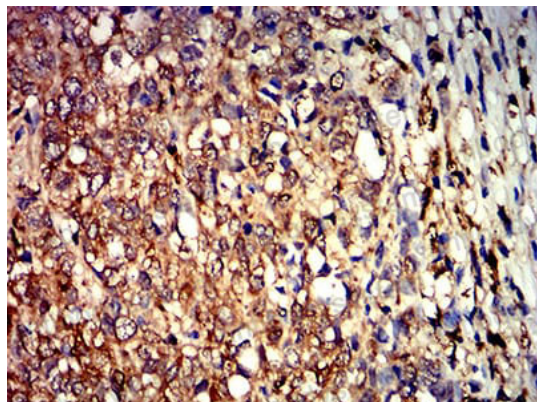
Flow Cytometry

Flow cytometric analysis of K562 cells using ALDOA mouse mAb (green) and negative control (red).



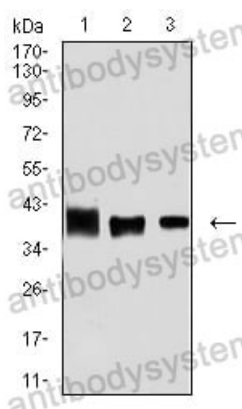
Immunohistochemical

Immunohistochemical analysis of paraffin-embedded human bladder cancer tissues using ALDOA mouse mAb with DAB staining.



Immunohistochemical

Immunohistochemical analysis of paraffin-embedded human breast cancer tissues using ALDOA mouse mAb with DAB staining.



Western blot

Western blot analysis using ALDOA mouse mAb against MCF-7 (1), HeLa (2), and NIH/3T3 (3) cell lysate.