

Anti-RAF1 Antibody (R2Y47)

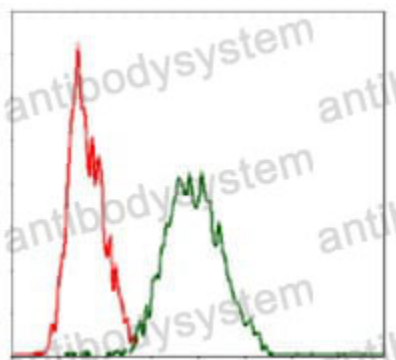
Summary

Catalog No.	RHC05403
Clone ID	R2Y47
Host species	Mouse
Tested applications	ELISA: 1:10000, FCM: 1:200-1:400, IHC: 1:200-1:1000, WB: 1:500-1:2000
Species reactivity	Human
Form	Liquid
Storage buffer	0.01M PBS, pH 7.4, 0.05% Sodium Azide.
Concentration	1 mg/ml
Purity	>95% as determined by SDS-PAGE.
Clonality	Monoclonal
Isotype	IgG1
Applications	ELISA, FCM, IHC, WB
Target	cRaf, RAF proto-oncogene serine/threonine-protein kinase, RAF1, Proto-oncogene c-RAF, RAF, Raf-1
Purification	Protein A/G purified from cell culture supernatant.
Endotoxin level	Please contact with the lab for this information.
Accession	P04049
Stability and Storage	Use a manual defrost freezer and avoid repeated freeze-thaw cycles. Store at 4°C short term (1-2 weeks). Store at -20°C 12 months. Store at -80°C long term.

Note

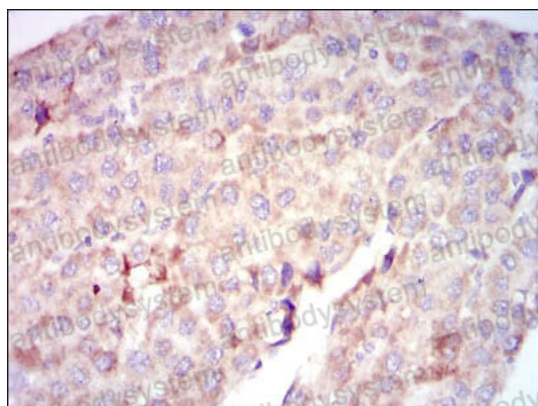
For research use only.

Data Image



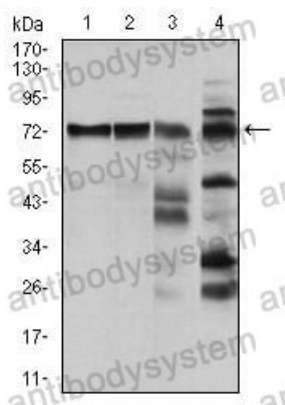
Flow Cytometry

Flow cytometric analysis of Hela cells using RAF1 mouse mAb (green) and negative control (red).



Immunohistochemical

Immunohistochemical analysis of paraffin-embedded human liver cancer tissues using RAF1 mouse mAb with DAB staining.



Western blot

Western blot analysis using RAF1 mouse mAb against Hela (1), A431 (2), Cos7 (3) and C6 (4) cell lysate.