

Anti-ESR1/ER-alpha Antibody (R2Y40)

Summary

Catalog No.	RHC03209
Clone ID	R2Y40
Host species	Mouse
Tested applications	ELISA: 1:10000, FCM: 1:200-1:400, IF: 1:50-1:500, IHC: 1:100-1:500, WB: 1:500-1:2000
Species reactivity	Human, Mouse, Rat, Rabbit
Form	Liquid
Storage buffer	0.01M PBS, pH 7.4, 0.05% Sodium Azide.
Concentration	1 mg/ml
Purity	>95% as determined by SDS-PAGE.
Clonality	Monoclonal
Isotype	IgG1
Applications	ELISA, FCM, IF, IHC, WB
Target	Estrogen receptor, ER-alpha, ESR, ER, ESR1, Nuclear receptor subfamily 3 group A member 1, NR3A1, Estradiol receptor
Purification	Protein A/G purified from cell culture supernatant.
Endotoxin level	Please contact with the lab for this information.
Accession	P03372

Stability and Storage

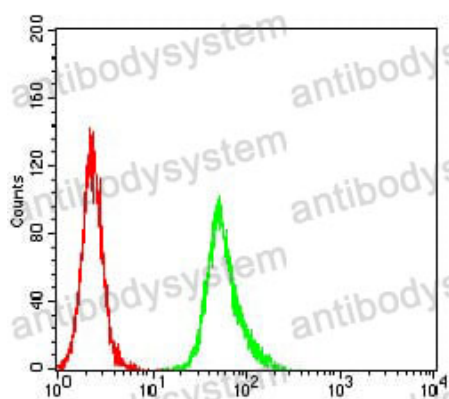
Use a manual defrost freezer and avoid repeated freeze-thaw cycles.

Store at 4°C short term (1-2 weeks). Store at -20°C 12 months. Store at -80°C long term.

Note

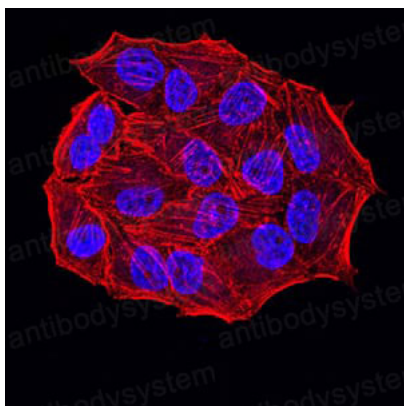
For research use only.

Data Image



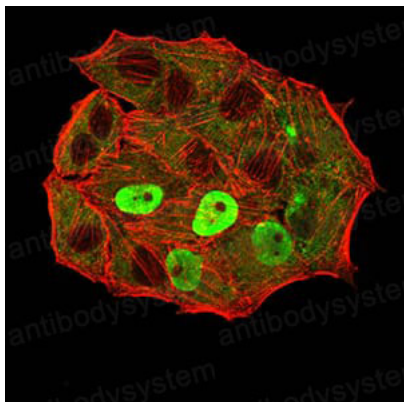
Flow Cytometry

Flow cytometric analysis of Hela cells using ESR1 mouse mAb (green) and negative control (red).



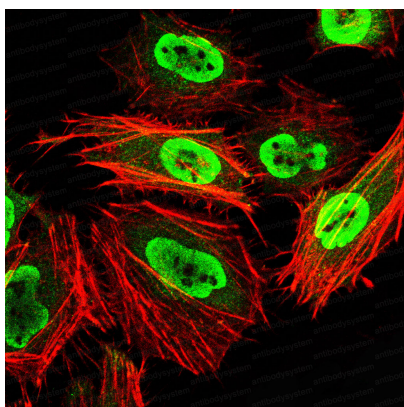
Immunofluorescence

Immunofluorescence analysis of Hela cells using ESR1 mouse mAb. Blue: DRAQ5 fluorescent DNA dye. Red: Actin filaments have been labeled with Alexa Fluor- 555 phalloidin.



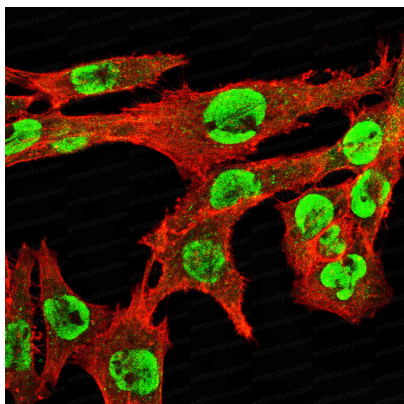
Immunofluorescence

Immunofluorescence analysis of HeLa cells using ESR1 mouse mAb (green). Blue: DRAQ5 fluorescent DNA dye. Red: Actin filaments have been labeled with Alexa Fluor- 555 phalloidin.



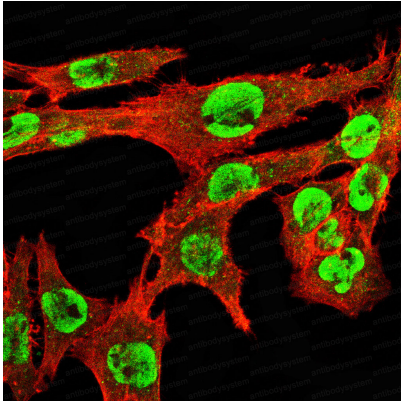
Immunofluorescence

Immunofluorescence analysis of HeLa cells using ESR1 mouse mAb (green). Blue: DRAQ5 fluorescent DNA dye. Red: Actin filaments have been labeled with Alexa Fluor- 555 phalloidin.



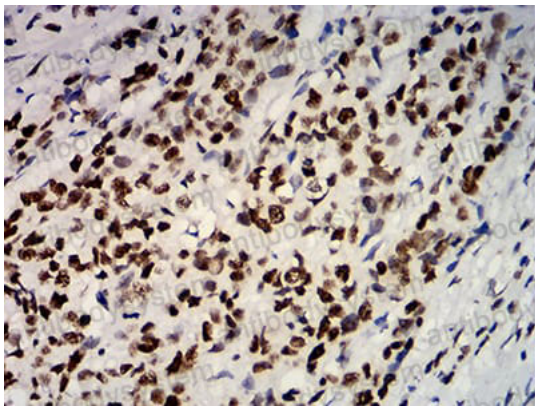
Immunofluorescence

Immunofluorescence analysis of COS7 cells using ESR1 mouse mAb (green). Blue: DRAQ5 fluorescent DNA dye. Red: Actin filaments have been labeled with Alexa Fluor- 555 phalloidin.



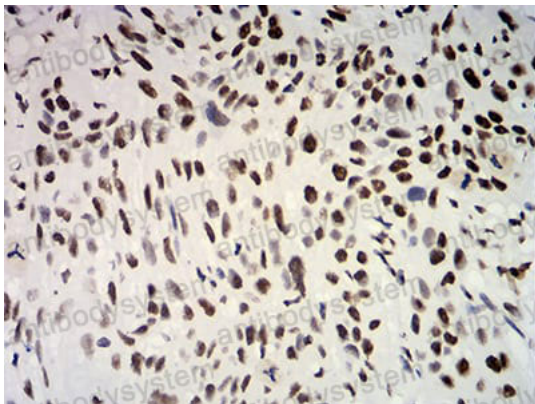
Immunofluorescence

Immunofluorescence analysis of COS7 cells using ESR1 mouse mAb (green). Blue: DRAQ5 fluorescent DNA dye. Red: Actin filaments have been labeled with Alexa Fluor- 555 phalloidin.



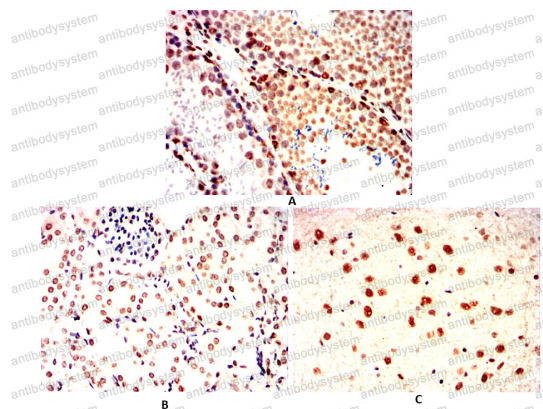
Immunohistochemical

Immunohistochemical analysis of paraffin-embedded human breast cancer tissues using ESR1 mouse mAb with DAB staining.



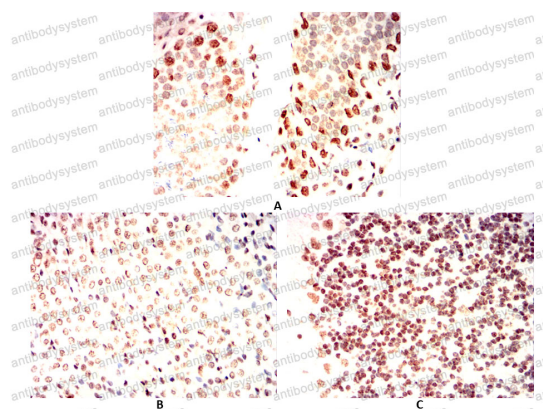
Immunohistochemical

Immunohistochemical analysis of paraffin-embedded human esophageal cancer tissues using ESR1 mouse mAb with DAB staining.



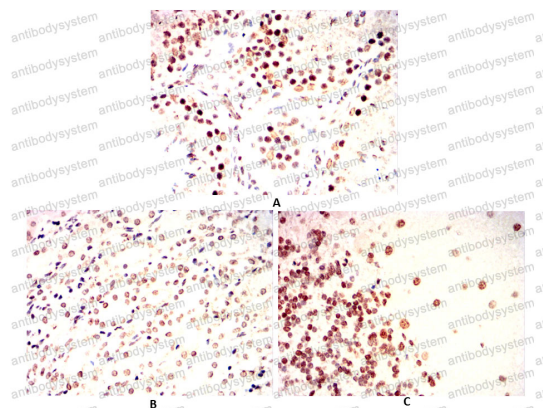
Immunohistochemical analysis of paraffin-embedded Mouse testicles(A) Mouse kidney(B) Mouse cerebellum(C) using ESR1 mouse mAb with DAB staining.

Immunohistochemical



Immunohistochemical analysis of paraffin-embedded Rat testicles(A) Rat kidney(B) Rat cerebellum(C) using ESR1 mouse mAb with DAB staining.

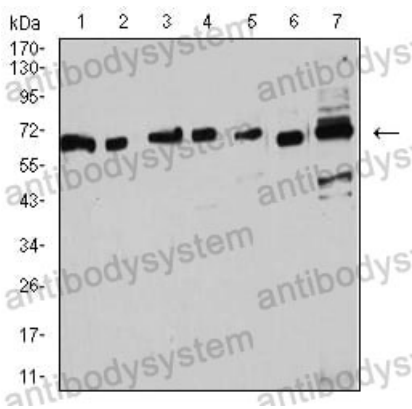
Immunohistochemical



Immunohistochemical analysis of paraffin-embedded Rabbit testicles(A) Rabbit cerebellum(B) Rabbit kidney(C) using ESR1 mouse mAb with DAB staining.

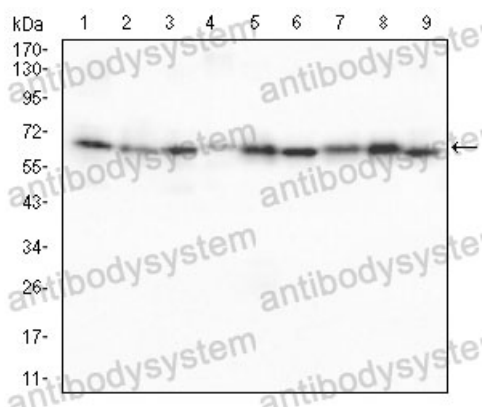
Immunohistochemical

Recombinant Proteins & Antibodies



Western blot

Western blot analysis using ESR1 mouse mAb against MOLT4 (1), Raji (2), MCF-7 (3), T47D (4), SK-Br-3 (5), HeLa (6), and C6 (7) cell lysate.



Western blot

Western blot analysis using ESR1 mouse mAb against PC-12(1)Raw264.7(2)NIH/3T3(3)NRK(4)C2C12(5)C6(6)L1210(7)F9(8)COS-7(9) cell lysate.