

Anti-ESR1/ER-alpha Antibody (R2Y39)

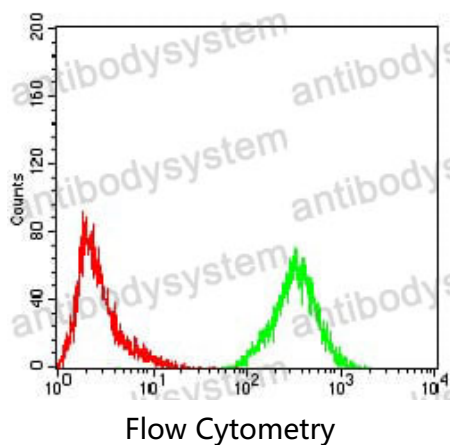
Summary

Catalog No.	RHC03208
Clone ID	R2Y39
Host species	Mouse
Tested applications	ELISA: 1:10000, FCM: 1:200-1:400
Species reactivity	Human
Form	Liquid
Storage buffer	0.01M PBS, pH 7.4, 0.05% Sodium Azide.
Concentration	1 mg/ml
Purity	>95% as determined by SDS-PAGE.
Clonality	Monoclonal
Isotype	IgG1
Applications	ELISA, FCM
Target	Estrogen receptor, ER-alpha, ESR, ER, ESR1, Nuclear receptor subfamily 3 group A member 1, NR3A1, Estradiol receptor
Purification	Protein A/G purified from cell culture supernatant.
Endotoxin level	Please contact with the lab for this information.
Accession	P03372
Stability and Storage	Use a manual defrost freezer and avoid repeated freeze-thaw cycles. Store at 4°C short term (1-2 weeks). Store at -20°C 12 months. Store at -80°C long term.

Note

For research use only.

Data Image



Flow cytometric analysis of HeLa cells using Eralpha(Tyr-537) mouse mAb (green) and negative control (red).