

Anti-ESR1/ER-alpha Antibody (R2Y38)

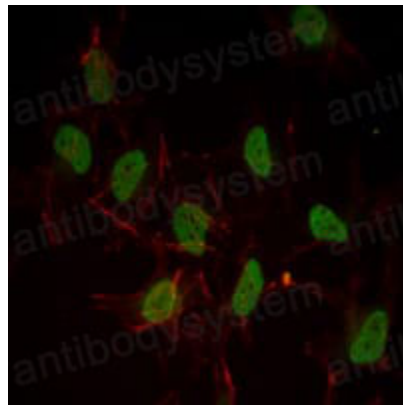
Summary

Catalog No.	RHC03207
Clone ID	R2Y38
Host species	Mouse
Tested applications	IF: 1:200-1:1000, IHC: 1:200-1:1000, WB: 1:500-1:2000
Species reactivity	Human
Form	Liquid
Storage buffer	0.01M PBS, pH 7.4, 0.05% Sodium Azide.
Concentration	1 mg/ml
Purity	>95% as determined by SDS-PAGE.
Clonality	Monoclonal
Isotype	IgG1
Applications	IF, IHC, WB
Target	Estrogen receptor, ER-alpha, ESR, ER, ESR1, Nuclear receptor subfamily 3 group A member 1, NR3A1, Estradiol receptor
Purification	Protein A/G purified from cell culture supernatant.
Endotoxin level	Please contact with the lab for this information.
Accession	P03372
Stability and Storage	Use a manual defrost freezer and avoid repeated freeze-thaw cycles. Store at 4°C short term (1-2 weeks). Store at -20°C 12 months. Store at -80°C long term.

Note

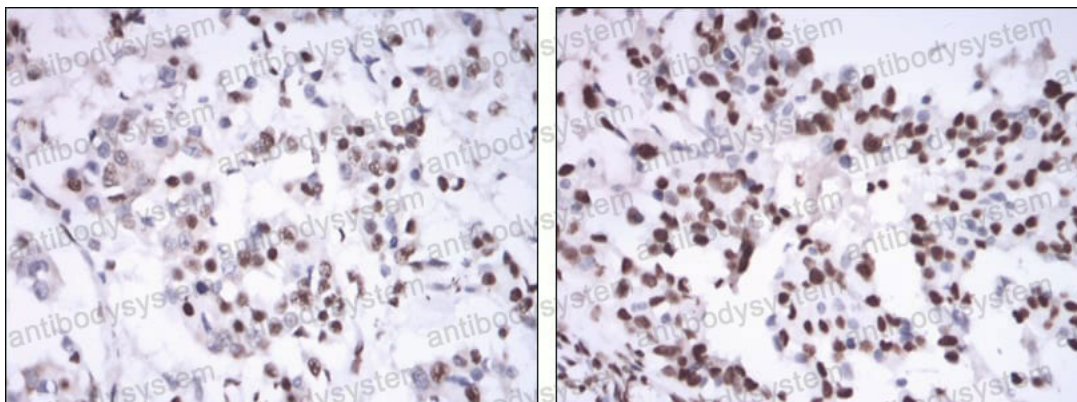
For research use only.

Data Image



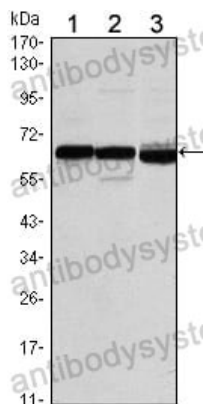
Immunofluorescence

Immunofluorescence analysis of Hela cells using ESR1 mouse mAb (green). Red: Actin filaments have been labeled with Alexa Fluor-555 phalloidin.



Immunohistochemical

Immunohistochemical analysis of paraffin-embedded human mammary cancer tissues using ESR1 mouse mAb with DAB staining.



Western blot

Western blot analysis
using ESR1 mouse mAb
against MCF-7 (1), T47D
(2) and SKBR3 (3) cell
lysate.