

# Anti-ESR1/ER-alpha Antibody (R2Y35)

## Summary

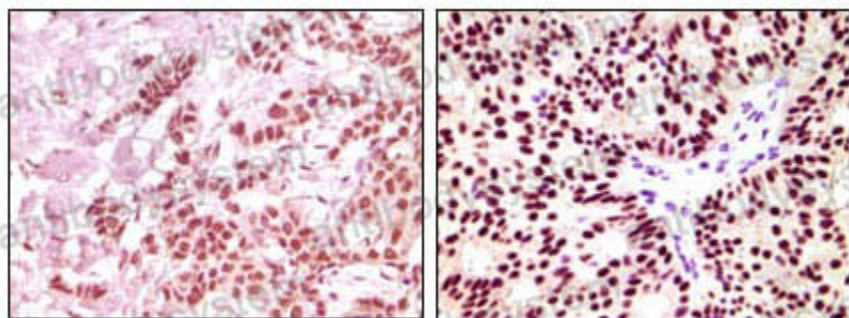
---

<b>Catalog No.</b>	RHC03204
<b>Clone ID</b>	R2Y35
<b>Host species</b>	Mouse
<b>Tested applications</b>	IHC: 1:200-1:1000, WB: 1:500-1:2000
<b>Species reactivity</b>	Human
<b>Form</b>	Liquid
<b>Storage buffer</b>	0.01M PBS, pH 7.4, 0.05% Sodium Azide.
<b>Concentration</b>	1 mg/ml
<b>Purity</b>	>95% as determined by SDS-PAGE.
<b>Clonality</b>	Monoclonal
<b>Isotype</b>	IgG1
<b>Applications</b>	IHC, WB
<b>Target</b>	Estrogen receptor, ER-alpha, ESR, ER, ESR1, Nuclear receptor subfamily 3 group A member 1, NR3A1, Estradiol receptor
<b>Purification</b>	Protein A/G purified from cell culture supernatant.
<b>Endotoxin level</b>	Please contact with the lab for this information.
<b>Accession</b>	P03372
<b>Stability and Storage</b>	Use a manual defrost freezer and avoid repeated freeze-thaw cycles. Store at 4°C short term (1-2 weeks). Store at -20°C 12 months. Store at -80°C long term.

Note

For research use only.

## Data Image



Immunohistochemical analysis of paraffin-embedded human breast carcinoma, using ER-alpha mouse mAb showing nuclear expression with DAB staining.

Immunohistochemical



Western blot analysis using ER-alpha mouse mAb against human breast carcinoma tissue lysate.

Western blot