

# Anti-FTL Antibody (R2Y33)

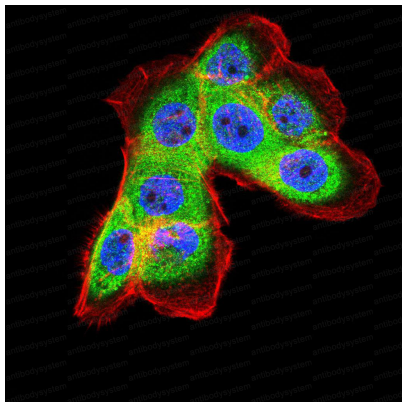
## Summary

---

<b>Catalog No.</b>	RHC02401
<b>Clone ID</b>	R2Y33
<b>Host species</b>	Mouse
<b>Tested applications</b>	ELISA: 1:10000, IF: 1:200-1:1000, IHC: 1:200-1:1000, WB: 1:500-1:2000
<b>Species reactivity</b>	Human
<b>Form</b>	Liquid
<b>Storage buffer</b>	0.01M PBS, pH 7.4, 0.05% Sodium Azide.
<b>Concentration</b>	1 mg/ml
<b>Purity</b>	>95% as determined by SDS-PAGE.
<b>Clonality</b>	Monoclonal
<b>Isotype</b>	IgG1
<b>Applications</b>	ELISA, IF, IHC, WB
<b>Target</b>	Ferritin light chain, FTL, Ferritin L subunit
<b>Purification</b>	Protein A/G purified from cell culture supernatant.
<b>Endotoxin level</b>	Please contact with the lab for this information.
<b>Accession</b>	P02792
<b>Stability and Storage</b>	Use a manual defrost freezer and avoid repeated freeze-thaw cycles. Store at 4°C short term (1-2 weeks). Store at -20°C 12 months. Store at -80°C long term.
<b>Note</b>	For research use only.

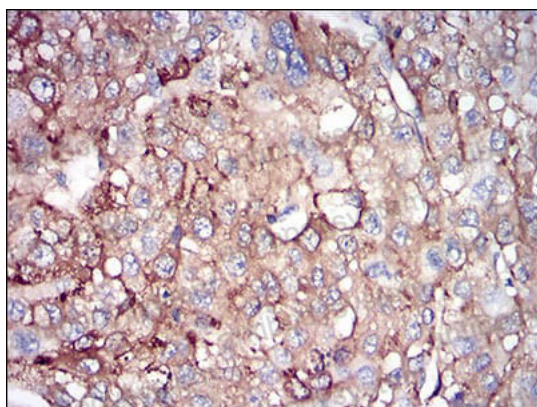
## Data Image

---



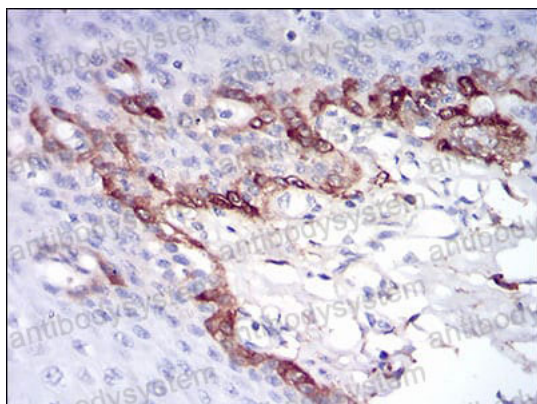
Immunofluorescence

Immunofluorescence analysis of A431 cells using FTL mouse mAb (green). Blue: DRAQ5 fluorescent DNA dye. Red: Actin filaments have been labeled with Alexa Fluor- 555 phalloidin.



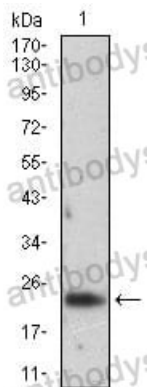
Immunohistochemical

Immunohistochemical analysis of paraffin-embedded human liver cancer tissues using FTL mouse mAb with DAB staining.



Immunohistochemical

Immunohistochemical analysis of paraffin-embedded human esophageal tissues using FTL mouse mAb with DAB staining.



Western blot

Western blot analysis using FTL mouse mAb against K562 cell lysate.