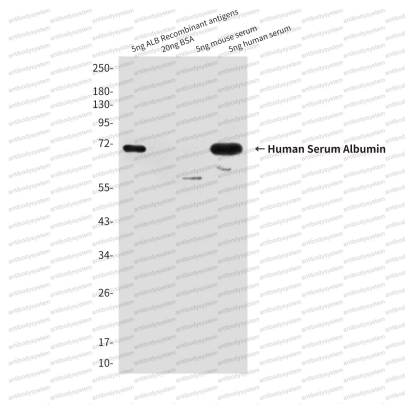


Anti-ALB/Albumin/HSA Antibody (R2Y23)

Summary

Catalog No.	RHC01409
Clone ID	R2Y23
Host species	Mouse
Tested applications	ELISA: 1:10000, WB: 1:500-1:1000
Species reactivity	Human
Form	Liquid
Storage buffer	0.01M PBS, pH 7.4, 0.5% BSA, 0.05% Sodium Azide and 50% Glycerol.
Concentration	1 mg/ml
Purity	>95% as determined by SDS-PAGE.
Clonality	Monoclonal
Isotype	IgG1
Applications	ELISA, WB
Target	ALB, Albumin
Purification	Protein A/G purified from cell culture supernatant.
Endotoxin level	Please contact with the lab for this information.
Accession	P02768
Stability and Storage	Use a manual defrost freezer and avoid repeated freeze-thaw cycles. Store at 4°C short term (1-2 weeks). Store at -20°C 12 months. Store at -80°C long term.
Note	For research use only.

Data Image



Western blot

Western blot analysis of Human Serum Albumin in 0.5nl Human serum and 5ng ALB Recombinant antigens lysates using Human Serum Albumin antibody.