

Anti-ALB/Albumin/HSA Antibody (R2Y21)

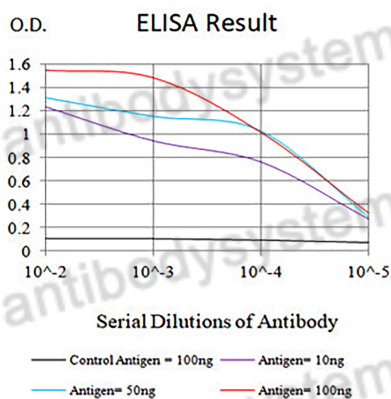
Summary

Catalog No.	RHC01406
Clone ID	R2Y21
Host species	Mouse
Tested applications	ELISA: 1:10000, FCM: 1:200-1:400, IF: 1:200-1:1000, IHC: 1:200-1:1000, WB: 1:500-1:2000
Species reactivity	Human, Monkey
Form	Liquid
Storage buffer	0.01M PBS, pH 7.4, 0.05% Sodium Azide.
Concentration	1 mg/ml
Purity	>95% as determined by SDS-PAGE.
Clonality	Monoclonal
Isotype	IgG2b
Applications	ELISA, FCM, IF, IHC, WB
Target	ALB, Albumin
Purification	Protein A/G purified from cell culture supernatant.
Endotoxin level	Please contact with the lab for this information.
Accession	P02768
Stability and Storage	Use a manual defrost freezer and avoid repeated freeze-thaw cycles. Store at 4°C short term (1-2 weeks). Store at -20°C 12 months. Store at -80°C long term.

Note

For research use only.

Data Image



Black line: Control Antigen (100 ng);Purple line: Antigen (10ng); Blue line: Antigen (50 ng); Red line: Antigen (100 ng)

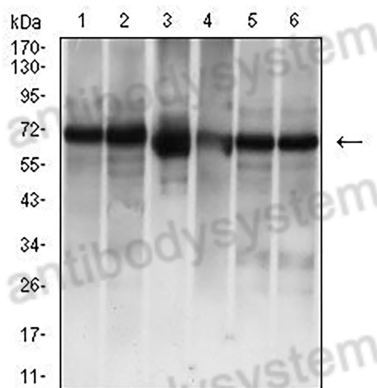
Bioactivity



Immunofluorescence

Immunofluorescence analysis of Hela cells using ALB mouse mAb (green). Blue: DRAQ5 fluorescent DNA dye. Red: Actin filaments have been labeled with Alexa Fluor- 555 phalloidin.

Various lysates were subjected to SDS PAGE followed by western blot with ALB/Albumin/HSA antibody (RHC01406) at 1 µg/ml.



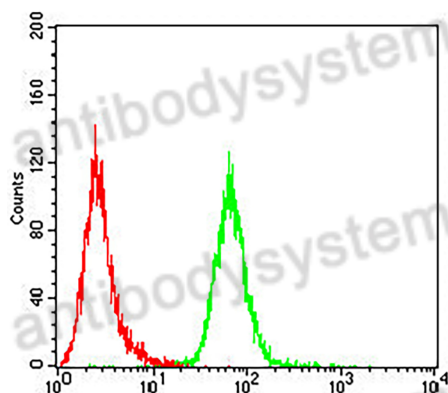
Western blot

Lane 1: COS-7
Lane 2: HepG2
Lane 3: serum
Lane 4: Liver
Lane 5: BEL-7402
Lane 6: HL7702

Second Ab: Goat Anti-Mouse IgG H&L Polyclonal antibody, HRP (PMB96431) at 0.1 µg/mL.

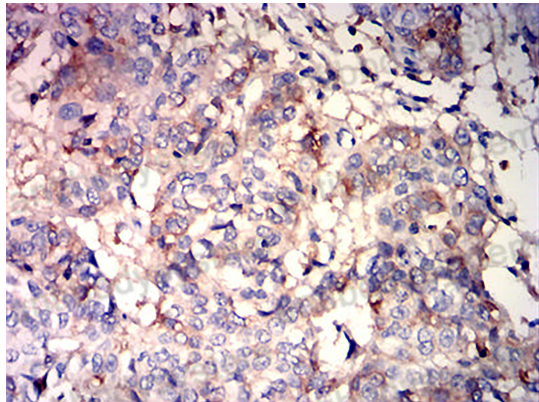
Predict MW: 70 kDa

Observed MW: 70 kDa



Flow cytometric

Flow cytometric analysis of HepG2 cells using ALB mouse mAb (green) and negative control (red).



Immunohistochemical

Immunohistochemical analysis of paraffin-embedded human bladder cancer tissues using ALB mouse mAb with DAB staining.