

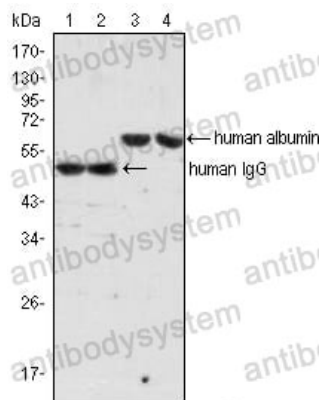
# Anti-ALB/Albumin/HSA Antibody (R2Y20)

## Summary

---

<b>Catalog No.</b>	RHC01407
<b>Clone ID</b>	R2Y20
<b>Host species</b>	Mouse
<b>Tested applications</b>	WB: 1:500-1:2000
<b>Species reactivity</b>	Human
<b>Form</b>	Liquid
<b>Storage buffer</b>	0.01M PBS, pH 7.4, 0.05% Sodium Azide.
<b>Concentration</b>	1 mg/ml
<b>Purity</b>	>95% as determined by SDS-PAGE.
<b>Clonality</b>	Monoclonal
<b>Isotype</b>	IgG1
<b>Applications</b>	WB
<b>Target</b>	ALB, Albumin
<b>Purification</b>	Protein A/G purified from cell culture supernatant.
<b>Endotoxin level</b>	Please contact with the lab for this information.
<b>Accession</b>	P02768
<b>Stability and Storage</b>	Use a manual defrost freezer and avoid repeated freeze-thaw cycles. Store at 4°C short term (1-2 weeks). Store at -20°C 12 months. Store at -80°C long term.
<b>Note</b>	For research use only.

## Data Image



Western blot

Western blot analysis using human Albumin mouse mAb (lane 3, 4) and human IgG mouse mAb (lane 1, 2) against human serum (lane 1, 3) and plasma (lane 2, 4).