

# Anti-CD233/SLC4A1 Antibody (R2Y04)

## Summary

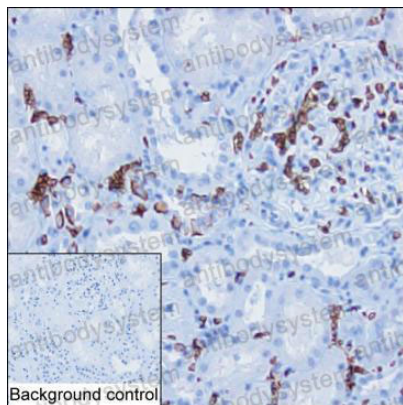
---

<b>Catalog No.</b>	RHB99803
<b>Clone ID</b>	R2Y04
<b>Host species</b>	Mouse
<b>Tested applications</b>	IHC: 1:500-1:1000, IP: 1:100-1:200
<b>Species reactivity</b>	Human
<b>Form</b>	Liquid
<b>Storage buffer</b>	0.01M PBS, pH 7.4, 0.05% Sodium Azide.
<b>Concentration</b>	1 mg/ml
<b>Purity</b>	>95% as determined by SDS-PAGE.
<b>Clonality</b>	Monoclonal
<b>Isotype</b>	IgG1
<b>Applications</b>	IHC, IP
<b>Target</b>	Anion exchange protein 1, Anion exchanger 1, EPB3, CD233, Band 3 anion transport protein, AE 1, DI, AE1, SLC4A1, Solute carrier family 4 member 1
<b>Purification</b>	Protein A/G purified from cell culture supernatant.
<b>Endotoxin level</b>	Please contact with the lab for this information.
<b>Accession</b>	P02730
<b>Stability and Storage</b>	Use a manual defrost freezer and avoid repeated freeze-thaw cycles. Store at 4°C short term (1-2 weeks). Store at -20°C 12 months. Store at -80°C long term.

**Note**

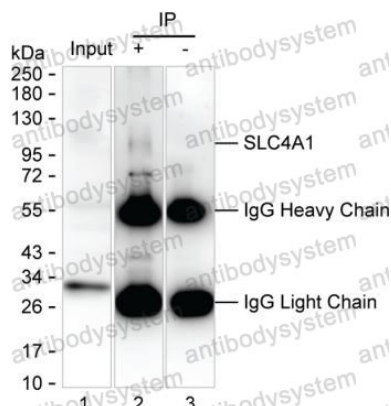
For research use only.

## Data Image



Immunohistochemical

IHC-P analysis of kidney tissue by SLC4A1 antibody (RHB99803). IHC-P was performed using sections of the formalin-fixed paraffin-embedded kidney tissue; Result: Cells in glomeruli are positively stained at the cytoplasm and cell membrane.



Immunoprecipitation

Lane 1: Kidney tissue lysate ; Lane 2: SLC4A1 immunoprecipitated from kidney tissue lysate by RHB99803; Lane 3: The same Lane 2 but use IgG isotype control antibody ; Result: RHB99803 can immunoprecipitate SLC4A1;