

Anti-KRT6A Antibody (R2X91)

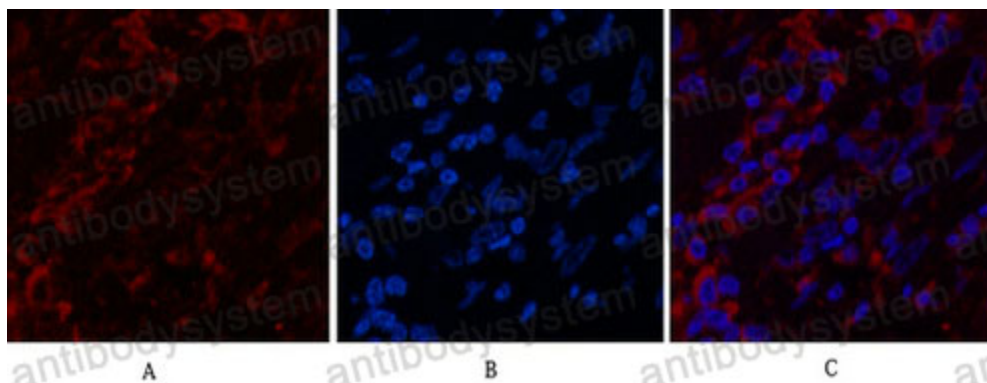
Summary

Catalog No.	RHB98101
Clone ID	R2X91
Host species	Mouse
Tested applications	IF: 1:50-1:200, IHC: 1:50-1:100, WB: 1:500-1:1000
Species reactivity	Human
Form	Liquid
Storage buffer	0.01M PBS, pH 7.4, 0.5% BSA, 0.05% Sodium Azide and 50% Glycerol.
Concentration	1 mg/ml
Purity	>95% as determined by SDS-PAGE.
Clonality	Monoclonal
Isotype	IgG1
Applications	IF, IHC, WB
Target	Cytokeratin-6A, Hom s 5, KRT6D, CK-6D, Cytokeratin-6D, K6A, Type-II keratin Kb6, Keratin-6A, KRT6A, Keratin, type II cytoskeletal 6A, CK-6A
Purification	Protein A/G purified from cell culture supernatant.
Endotoxin level	Please contact with the lab for this information.
Accession	P02538, P04259, P48668
Stability and Storage	Use a manual defrost freezer and avoid repeated freeze-thaw cycles. Store at 4°C short term (1-2 weeks). Store at -20°C 12 months. Store at -80°C long term.

Note

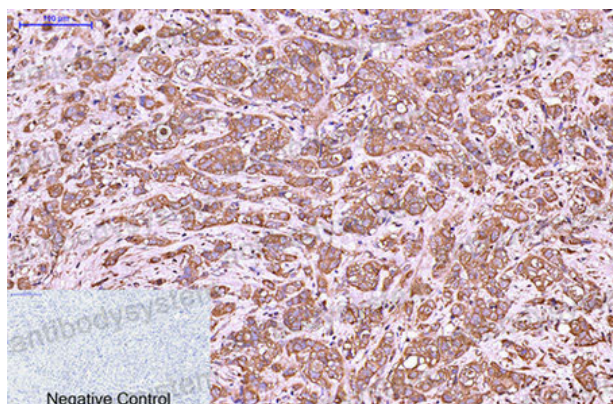
For research use only.

Data Image



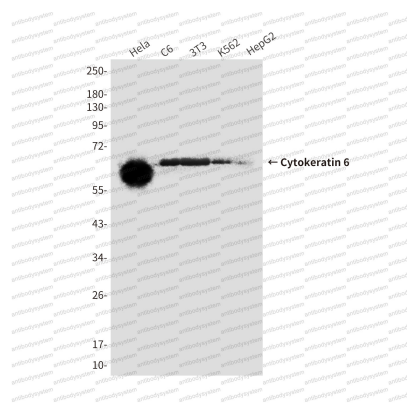
Immunofluorescence

Immunofluorescence analysis of Cytokeratin 6 in Human breast cancer tissue using Cytokeratin 6 antibody (red), and DAPI (blue).



Immunohistochemical

Immunohistochemistry analysis of paraffin-embedded Human breast cancer tissue using Cytokeratin 6 antibody. High-pressure and temperature Sodium Citrate pH 6.0 was used for antigen retrieval. Negative control was used by secondary antibody only.



Western blot

Western blot analysis of
Cytokeratin 6 in Hela, C6, 3T3,
K562, HepG2 lysates using
Cytokeratin 6 antibody