

Anti-KRT6A Antibody (R2X90)

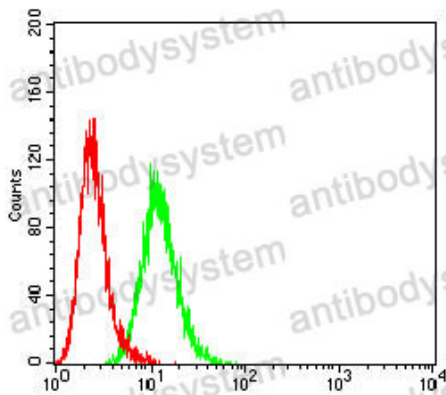
Summary

Catalog No.	RHB98102
Clone ID	R2X90
Host species	Mouse
Tested applications	ELISA: 1:10000, FCM: 1:200-1:400, IF: 1:200-1:1000, WB: 1:500-1:2000
Species reactivity	Human
Form	Liquid
Storage buffer	0.01M PBS, pH 7.4, 0.05% Sodium Azide.
Concentration	1 mg/ml
Purity	>95% as determined by SDS-PAGE.
Clonality	Monoclonal
Isotype	IgG2b
Applications	ELISA, FCM, IF, WB
Target	Cytokeratin-6A, Hom s 5, KRT6D, CK-6D, Cytokeratin-6D, K6A, Type-II keratin Kb6, Keratin-6A, KRT6A, Keratin, type II cytoskeletal 6A, CK-6A
Purification	Protein A/G purified from cell culture supernatant.
Endotoxin level	Please contact with the lab for this information.
Accession	P02538
Stability and Storage	Use a manual defrost freezer and avoid repeated freeze-thaw cycles. Store at 4°C short term (1-2 weeks). Store at -20°C 12 months. Store at -80°C long term.

Note

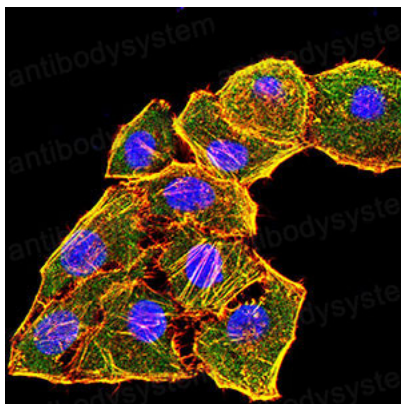
For research use only.

Data Image



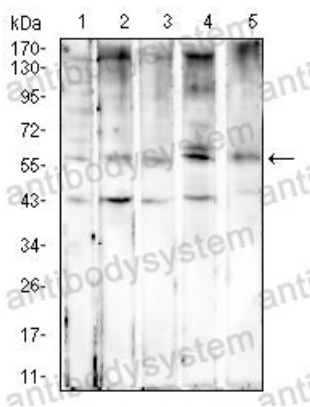
Flow Cytometry

Flow cytometric analysis of Hela cells using KRT6A mouse mAb (green) and negative control (red).



Immunofluorescence

Immunofluorescence analysis of Hela cells using KRT6A mouse mAb (green). Blue: DRAQ5 fluorescent DNA dye. Red: Actin filaments have been labeled with Alexa Fluor- 555 phalloidin.



Western blot

Western blot analysis using KRT6A mouse mAb against HeLa (1), MCF-7 (2), SW480 (3), HepG2 (4), and T47D (5) cell lysate.