

Anti-CRYAB Antibody (R2X85)

Summary

Catalog No.	RHB97902
Clone ID	R2X85
Host species	Mouse
Tested applications	IHC: 1:200-1:1000
Species reactivity	Human
Form	Liquid
Storage buffer	0.01M PBS, pH 7.4, 0.05% Sodium Azide.
Concentration	1 mg/ml
Purity	>95% as determined by SDS-PAGE.
Clonality	Monoclonal
Isotype	IgG2a
Applications	IHC
Target	Rosenthal fiber component, CRYA2, HspB5, Alpha-crystallin B chain, HSPB5, Heat shock protein beta-5, Alpha(B)-crystallin, CRYAB, Renal carcinoma antigen NY-REN-27
Purification	Protein A/G purified from cell culture supernatant.
Endotoxin level	Please contact with the lab for this information.
Accession	P02511

Recombinant Proteins & Antibodies

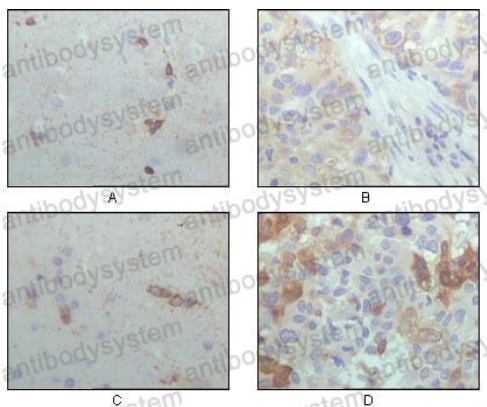
Stability and Storage

Use a manual defrost freezer and avoid repeated freeze-thaw cycles.

Store at 4°C short term (1-2 weeks). Store at -20°C 12 months. Store at -80°C long term.

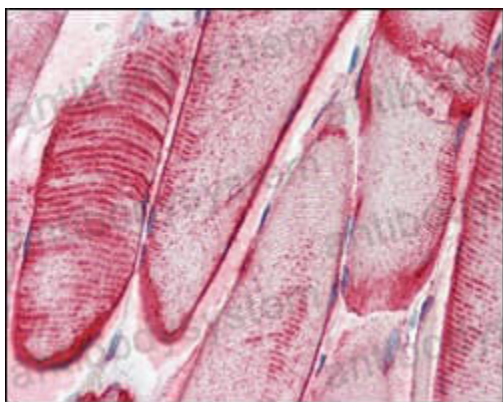
Note

For research use only.

Data Image

Immunohistochemical

Immunohistochemical analysis of paraffin-embedded human brain hippocampus (A), lung cancer (B), brain tumor (C), breast cancer (D), showing cytoplasmic localization with DAB staining using CRYAB mouse mAb.



Immunohistochemical

Immunohistochemical analysis of paraffin-embedded human skeletal muscle tissues using CRYAB mouse mAb.