

# Anti-Rat IgG2b Antibody (R2X69)

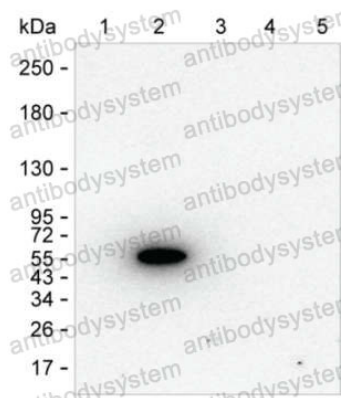
## Summary

---

<b>Catalog No.</b>	RRB96801
<b>Clone ID</b>	R2X69
<b>Host species</b>	Mouse
<b>Tested applications</b>	WB: 1:500-1:1000
<b>Species reactivity</b>	Rat
<b>Form</b>	Liquid
<b>Storage buffer</b>	0.01M PBS, pH 7.4, 0.05% Sodium Azide.
<b>Concentration</b>	1 mg/ml
<b>Purity</b>	>95% as determined by SDS-PAGE.
<b>Clonality</b>	Monoclonal
<b>Isotype</b>	IgG1
<b>Applications</b>	WB
<b>Target</b>	IgG2b
<b>Purification</b>	Protein A/G purified from cell culture supernatant.
<b>Endotoxin level</b>	Please contact with the lab for this information.
<b>Accession</b>	P20761
<b>Stability and Storage</b>	Use a manual defrost freezer and avoid repeated freeze-thaw cycles. Store at 4°C short term (1-2 weeks). Store at -20°C 12 months. Store at -80°C long term.
<b>Note</b>	For research use only.

## Data Image

---



Western blot

Lane 1: 100 ng of rat IgG2a; Lane 2: 100 ng of rat IgG2b; Lane 3: 100 ng of rat IgG2c; Lane 4: 100 ng of rat IgG1; Lane 5: 100 ng of IgG1; Result: RRB96801 can specifically detect rat IgG2b by Western blotting;