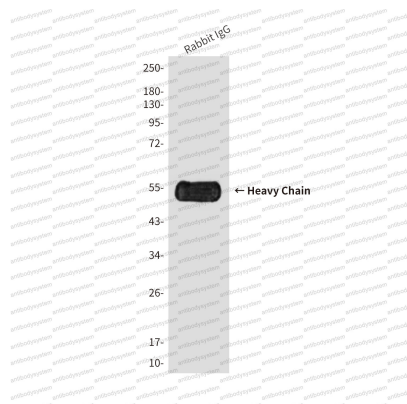


Anti-Rabbit IgG Fc Fragment Antibody (R2X65)

Summary

Catalog No.	RTB96402
Clone ID	R2X65
Host species	Mouse
Tested applications	WB: 1:500-1:1000
Species reactivity	Rabbit
Form	Liquid
Storage buffer	0.01M PBS, pH 7.4, 0.5% BSA, 0.05% Sodium Azide and 50% Glycerol.
Concentration	1 mg/ml
Purity	>95% as determined by SDS-PAGE.
Clonality	Monoclonal
Isotype	IgG1
Applications	WB
Target	IgG Fc fragment, Immunoglobulin gamma Fc fragment
Purification	Protein A/G purified from cell culture supernatant.
Endotoxin level	Please contact with the lab for this information.
Accession	P01870
Stability and Storage	Use a manual defrost freezer and avoid repeated freeze-thaw cycles. Store at 4°C short term (1-2 weeks). Store at -20°C 12 months. Store at -80°C long term.
Note	For research use only.

Data Image



Western blot

Western blot analysis of Reduced Rabbit IgG, H+L using Rabbit IgG Fc antibody.