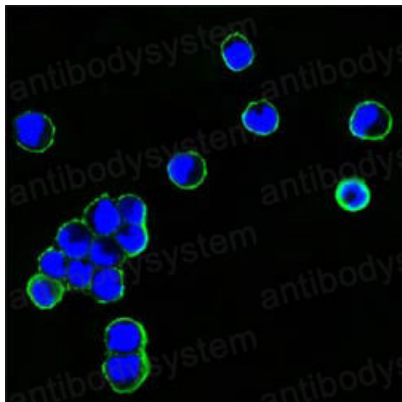


Anti-Human IgG Fc Fragment Antibody (R2X62)

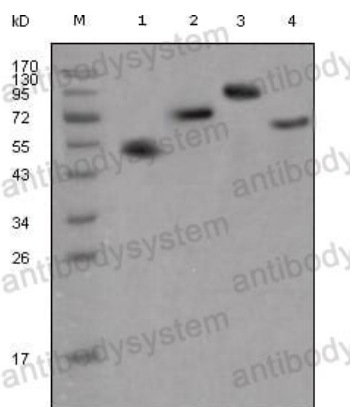
Summary

Catalog No.	RHB96402
Clone ID	R2X62
Host species	Mouse
Tested applications	IF: 1:200-1:1000, WB: 1:500-1:2000
Species reactivity	Human
Form	Liquid
Storage buffer	0.01M PBS, pH 7.4, 0.05% Sodium Azide.
Concentration	1 mg/ml
Purity	>95% as determined by SDS-PAGE.
Clonality	Monoclonal
Isotype	IgG1
Applications	IF, WB
Target	IgG Fc fragment, Immunoglobulin gamma Fc fragment
Purification	Protein A/G purified from cell culture supernatant.
Endotoxin level	Please contact with the lab for this information.
Accession	IgG
Stability and Storage	Use a manual defrost freezer and avoid repeated freeze-thaw cycles. Store at 4°C short term (1-2 weeks). Store at -20°C 12 months. Store at -80°C long term.
Note	For research use only.

Data Image



Immunofluorescence



Western blot

Confocal Immunofluorescence analysis of HEK293 cells transfected with recombinant plasmid with human IgG Fc tag using human IgGFc mouse mAb (green). Blue: DRAQ5 fluorescent DNA dye.

Western blot analysis using human IgG (Fc specific) mouse mAb against different fusion proteins with human IgG(Fc specific) tag.