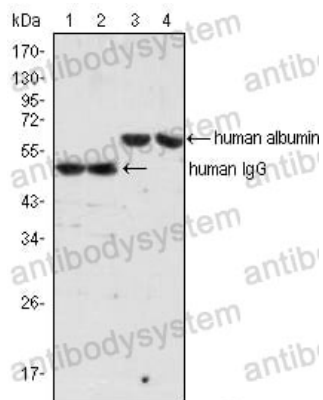


Anti-Human IgG Antibody (R2X61)

Summary

Catalog No.	RHB96401
Clone ID	R2X61
Host species	Mouse
Tested applications	WB: 1:500-1:2000
Species reactivity	Human
Form	Liquid
Storage buffer	0.01M PBS, pH 7.4, 0.05% Sodium Azide.
Concentration	1 mg/ml
Purity	>95% as determined by SDS-PAGE.
Clonality	Monoclonal
Isotype	IgG1
Applications	WB
Target	IgG, Ig gamma, Immunoglobulin gamma
Purification	Protein A/G purified from cell culture supernatant.
Endotoxin level	Please contact with the lab for this information.
Accession	IgG
Stability and Storage	Use a manual defrost freezer and avoid repeated freeze-thaw cycles. Store at 4°C short term (1-2 weeks). Store at -20°C 12 months. Store at -80°C long term.
Note	For research use only.

Data Image



Western blot

Western blot analysis using IgG mouse mAb (lane 1, 2) and Albumin mouse mAb (lane 3, 4) against human serum (lane 1, 3) and plasma (lane 2, 4).