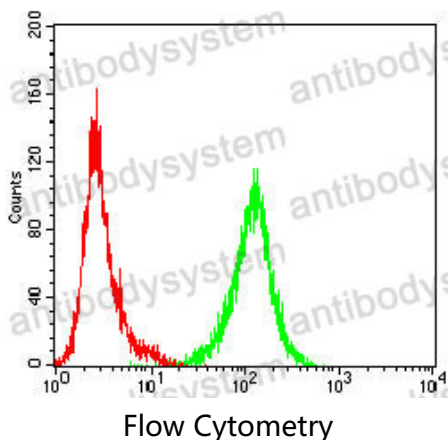


Anti-IL1B/IL1F2 Antibody (R2X48)

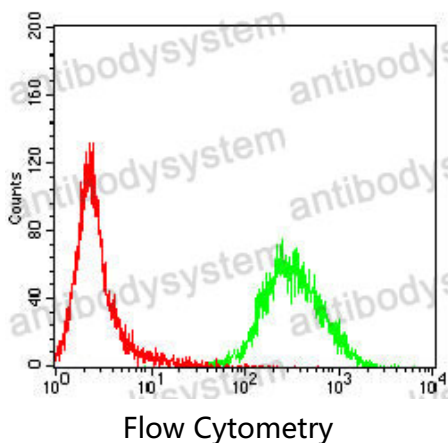
Summary

Catalog No.	RHB95603
Clone ID	R2X48
Host species	Mouse
Tested applications	ELISA: 1:10000, FCM: 1:200-1:400, IF: 1:200-1:1000, IHC: 1:200-1:1000
Species reactivity	Human
Form	Liquid
Storage buffer	0.01M PBS, pH 7.4, 0.05% Sodium Azide.
Concentration	1 mg/ml
Purity	>95% as determined by SDS-PAGE.
Clonality	Monoclonal
Isotype	IgG1
Applications	ELISA, FCM, IF, IHC
Target	Interleukin-1 beta, IL1B, Catabolin, IL1F2, IL-1 beta
Purification	Protein A/G purified from cell culture supernatant.
Endotoxin level	Please contact with the lab for this information.
Accession	P01584
Stability and Storage	Use a manual defrost freezer and avoid repeated freeze-thaw cycles. Store at 4°C short term (1-2 weeks). Store at -20°C 12 months. Store at -80°C long term.
Note	For research use only.

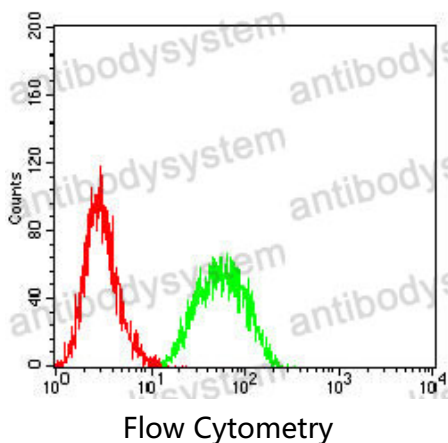
Data Image



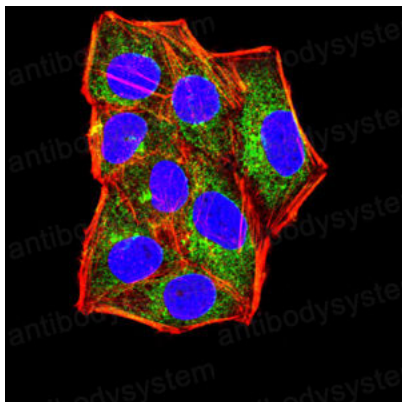
Flow cytometric analysis of Jurkat cells using IL1B mouse mAb (green) and negative control (red).



Flow cytometric analysis of MOLT4 cells using IL1B mouse mAb (green) and negative control (red).

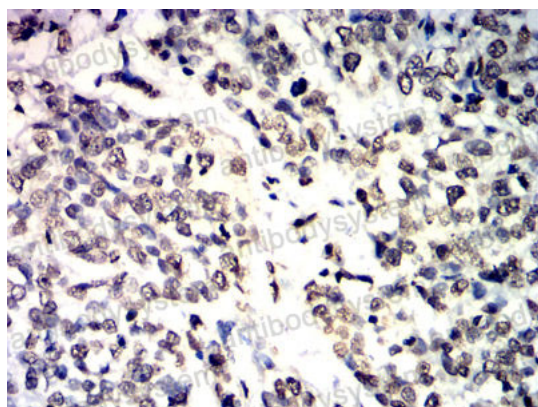


Flow cytometric analysis of THP-1 cells using IL1B mouse mAb (green) and negative control (red).



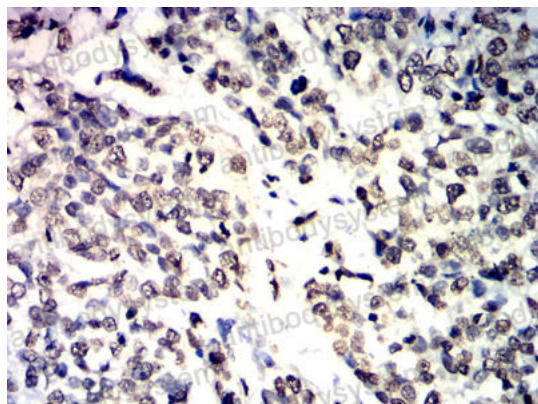
Immunofluorescence

Immunofluorescence analysis of HeLa cells using IL1B mouse mAb (green). Blue: DRAQ5 fluorescent DNA dye. Red: Actin filaments have been labeled with Alexa Fluor- 555 phalloidin.



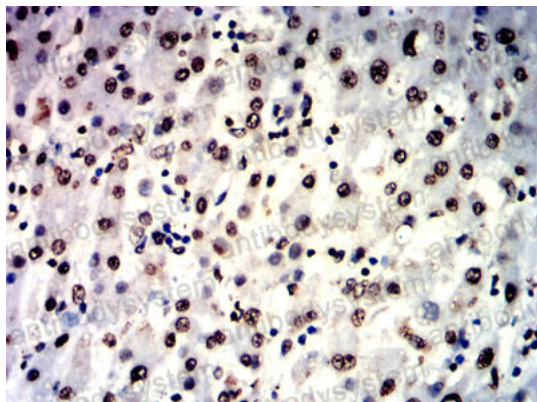
Immunohistochemical

Immunohistochemical analysis of paraffin-embedded human bladder cancer tissues using IL1B mouse mAb with DAB staining.



Immunohistochemical

Immunohistochemical analysis of paraffin-embedded human bladder cancer tissues using IL1B mouse mAb with DAB staining.



Immunohistochemical

Immunohistochemical analysis of paraffin-embedded human liver cancer tissues using IL1B mouse mAb with DAB staining.