

Anti-IFNA2/IFN-alpha-2 Antibody (R2X43)

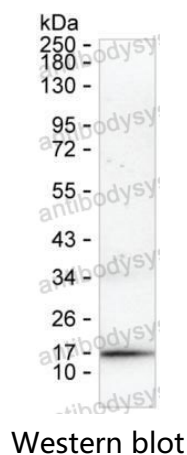
Summary

| | |
|------------------------------|---|
| Catalog No. | RHB94601 |
| Clone ID | R2X43 |
| Host species | Mouse |
| Tested applications | WB: 1:500-1:1000 |
| Species reactivity | Human |
| Form | Liquid |
| Storage buffer | 0.01M PBS, pH 7.4, 0.05% Sodium Azide. |
| Concentration | 1 mg/ml |
| Purity | >95% as determined by SDS-PAGE. |
| Clonality | Monoclonal |
| Isotype | IgG1 |
| Applications | WB |
| Target | Interferon alpha-2, IFNA2C, IFNA2, IFN-alpha-2, LeIF A, IFNA2A, IFNA2B, Interferon alpha-A |
| Purification | Protein A/G purified from cell culture supernatant. |
| Endotoxin level | Please contact with the lab for this information. |
| Accession | P01563 |
| Stability and Storage | Use a manual defrost freezer and avoid repeated freeze-thaw cycles. Store at 4°C short term (1-2 weeks). Store at -20°C 12 months. Store at -80°C long term. |

Note

For research use only.

Data Image



Result: RHB94601 can detect human IFNA2 by Western blotting.