

# Anti-FSHB Antibody (R2X28)

## Summary

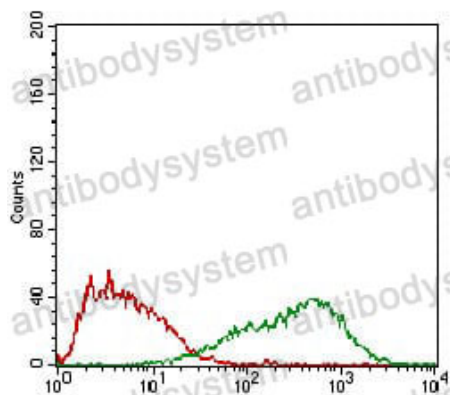
---

<b>Catalog No.</b>	RHB92703
<b>Clone ID</b>	R2X28
<b>Host species</b>	Mouse
<b>Tested applications</b>	ELISA: 1:10000, FCM: 1:200-1:400, WB: 1:500-1:2000
<b>Species reactivity</b>	Human
<b>Form</b>	Liquid
<b>Storage buffer</b>	0.01M PBS, pH 7.4, 0.05% Sodium Azide.
<b>Concentration</b>	1 mg/ml
<b>Purity</b>	>95% as determined by SDS-PAGE.
<b>Clonality</b>	Monoclonal
<b>Isotype</b>	IgG1
<b>Applications</b>	ELISA, FCM, WB
<b>Target</b>	Follicle-stimulating hormone beta subunit, Follicotropin beta chain, FSH-beta, FSH-B, FSHB, Follicotropin subunit beta
<b>Purification</b>	Protein A/G purified from cell culture supernatant.
<b>Endotoxin level</b>	Please contact with the lab for this information.
<b>Accession</b>	P01225
<b>Stability and Storage</b>	Use a manual defrost freezer and avoid repeated freeze-thaw cycles. Store at 4°C short term (1-2 weeks). Store at -20°C 12 months. Store at -80°C long term.

## Note

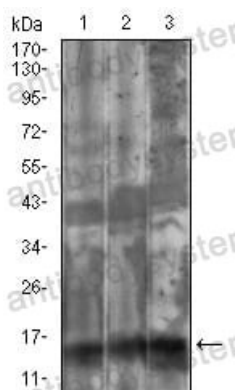
For research use only.

## Data Image



Flow Cytometry

Flow cytometric analysis of HepG2 cells using FSHB mouse mAb (green) and negative control (red).



Western blot

Western blot analysis using FSHB mouse mAb against Cos7 (1), HepG2 (2), HEK293 (3) cell lysate.