

Anti-TSHB Antibody (R2X27)

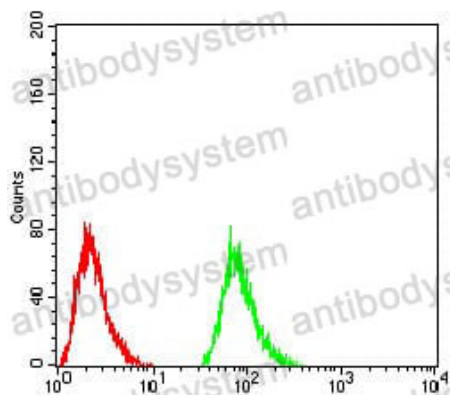
Summary

Catalog No.	RHB92601
Clone ID	R2X27
Host species	Mouse
Tested applications	ELISA: 1:10000, FCM: 1:200-1:400, IHC: 1:200-1:1000
Species reactivity	Human
Form	Liquid
Storage buffer	0.01M PBS, pH 7.4, 0.05% Sodium Azide.
Concentration	1 mg/ml
Purity	>95% as determined by SDS-PAGE.
Clonality	Monoclonal
Isotype	IgG2b
Applications	ELISA, FCM, IHC
Target	Thyrotropin subunit beta, TSHB, Thyrotropin beta chain, Thyroid-stimulating hormone subunit beta, TSH-beta, TSH-B, Thyrotropin alfa
Purification	Protein A/G purified from cell culture supernatant.
Endotoxin level	Please contact with the lab for this information.
Accession	P01222
Stability and Storage	Use a manual defrost freezer and avoid repeated freeze-thaw cycles. Store at 4°C short term (1-2 weeks). Store at -20°C 12 months. Store at -80°C long term.

Note

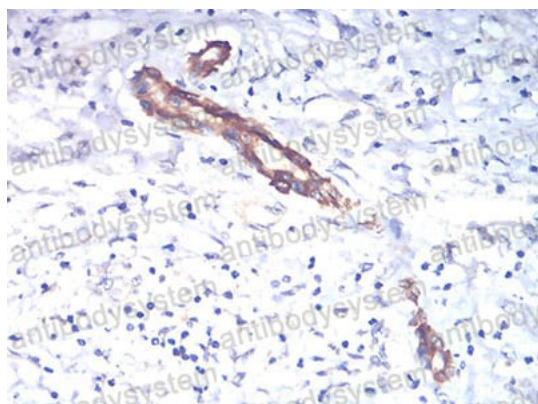
For research use only.

Data Image



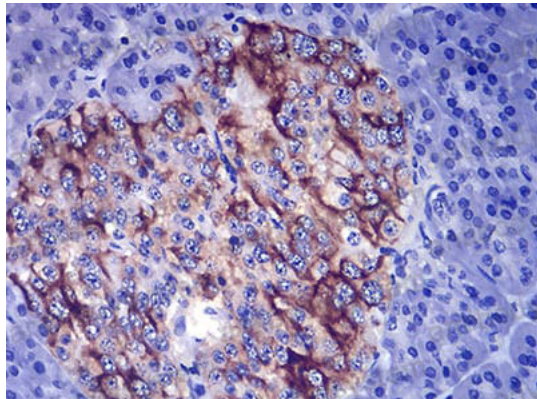
Flow Cytometry

Flow cytometric analysis of Hela cells using TSHB mouse mAb (green) and negative control (red).



Immunohistochemical

Immunohistochemical analysis of paraffin-embedded human liver cancer tissues using TSHB mouse mAb with DAB staining.



Immunohistochemical

Immunohistochemical analysis of paraffin-embedded human pancreas tissues using TSHB mouse mAb with DAB staining.