

Anti-TGFB1/TGF-beta-1 Antibody (R2X20)

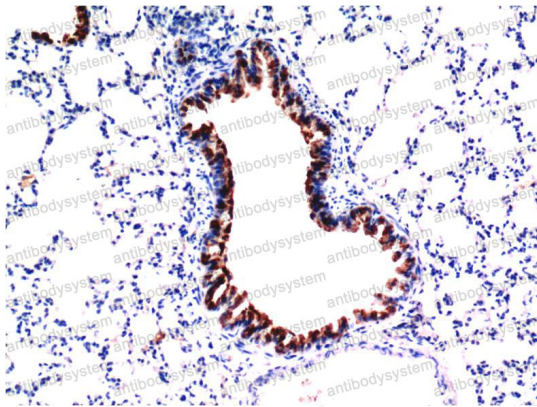
Summary

Catalog No.	RMB91602
Clone ID	R2X20
Host species	Mouse
Tested applications	IHC: 1:50-1:100
Species reactivity	Mouse, Rat
Form	Liquid
Storage buffer	0.01M PBS, pH 7.4, 0.5% BSA, 0.05% Sodium Azide and 50% Glycerol.
Concentration	1 mg/ml
Purity	>95% as determined by SDS-PAGE.
Clonality	Monoclonal
Isotype	IgG1
Applications	IHC
Target	Transforming growth factor beta-1 proprotein, LAP, TGF-beta-1, TGFB1, TGFB
Purification	Protein A/G purified from cell culture supernatant.
Endotoxin level	Please contact with the lab for this information.
Accession	P04202
Stability and Storage	Use a manual defrost freezer and avoid repeated freeze-thaw cycles. Store at 4°C short term (1-2 weeks). Store at -20°C 12 months. Store at -80°C long term.

Note

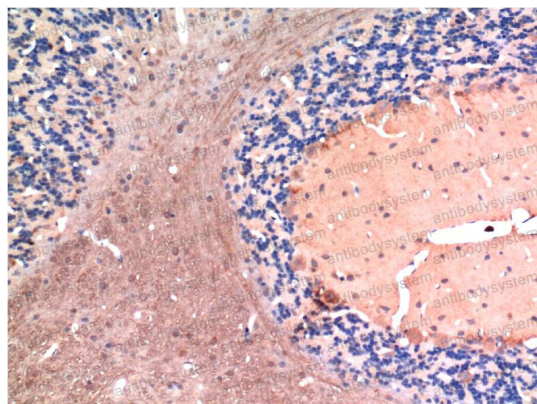
For research use only.

Data Image



Immunohistochemical

Immunohistochemistry analysis of paraffin-embedded mouse Lung Tissue using TGF beta 1 antibody. High-pressure and temperature Sodium Citrate pH 6.0 was used for antigen retrieval.



Immunohistochemical

Immunohistochemical analysis of paraffin-embedded Human tonsils using TGF beta 1 antibody. High-pressure and temperature Sodium Citrate pH 6.0 was used for antigen retrieval.