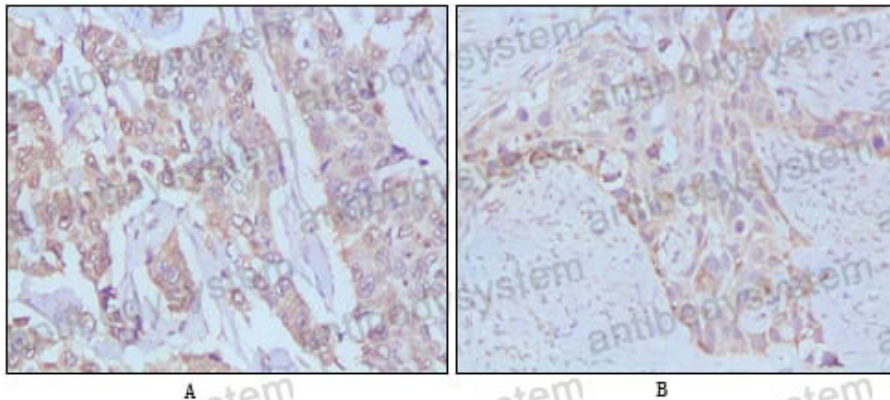


Anti-EGF Antibody (R2X16)

Summary

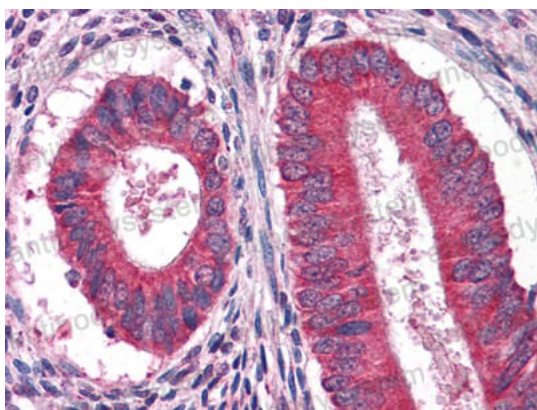
Catalog No.	RHB91401
Clone ID	R2X16
Host species	Mouse
Tested applications	IHC: 1:200-1:1000
Species reactivity	Human
Form	Liquid
Storage buffer	0.01M PBS, pH 7.4, 0.05% Sodium Azide.
Concentration	1 mg/ml
Purity	>95% as determined by SDS-PAGE.
Clonality	Monoclonal
Isotype	IgG1
Applications	IHC
Target	Urogastrone, Pro-epidermal growth factor, EGF
Purification	Protein A/G purified from cell culture supernatant.
Endotoxin level	Please contact with the lab for this information.
Accession	P01133
Stability and Storage	Use a manual defrost freezer and avoid repeated freeze-thaw cycles. Store at 4°C short term (1-2 weeks). Store at -20°C 12 months. Store at -80°C long term.
Note	For research use only.

Data Image



Immunohistochemical analysis of paraffin-embedded human breast cancer, Lung breast tissues using EGF mouse mAb

Immunohistochemical



Immunohistochemical analysis of paraffin-embedded human Uterus tissues using anFtEG mouse mAb

Immunohistochemical